

## Division Leaders Of Local "March Of Dimes" Drive



James J. Tully

Henry Lewis

Francis H. McCoy

Mrs. William J. Long

Joseph Howley

### TULLY ANNOUNCES DIVISION LEADERS IN DIMES MARCH

Henry Lewis And Francis McCoy Named To Serve As Co-Chairmen; Starts Jan. 1

James J. Tully, March of Dimes chairman for Belleville, this week revealed that the organization for this year's campaign in town has been completed. The drive for funds to fight polio will start on January 1, he said, and run for the entire month.

At the same time, Tully announced the appointment of Henry Lewis and Francis H. McCoy as co-chairmen for the local drive. The two will assist Tully in handling the fund raising appeal.

Other division leaders named were Mrs. Edward A. Rochau, chairman of the women's division; Mrs. William J. Long, chairman of the Mother's March; Mrs. Viola Spray and Mrs. Lester Verdon, co-chairmen of the Mother's March; Joseph Howley, treasurer; and Mrs. Margaret T. Oeschwald, secretary.

**Not Liked Yet**  
Tully has been March of Dimes chairman in Belleville for the past seven years, during which time the drive has consistently placed near the top among Essex County communities. Tully warned local residents that the fight against polio is not liked yet, despite the Salk vaccine, and he stressed the dangers that could spring from a feeling of complacency.

Serving as co-chairman of the local drive is Lewis, who has been a Belleville resident for the past seven years. He is a trustee of the Belleville Community Chest and has been active in civic and social organizations. He is office manager for Max Blau & Sons in Newark.

The second co-chairman, McCoy, has been a life-long resident of town. He is assistant

(Continued On Page Two)

### Weekend Weather

It will be a very cold weekend with cloudy skies forecast for Saturday and snow flurries for Sunday.

### The Face Is Familiar:

## Genial Gent Has Returned To Town

By RITA KNOLL

That season's back, and so is its most popular personality, the man who'd be guaranteed of a landslide win if he ever ran for election to anything - Santa Claus.

But Santa's popularity doesn't have to be assured by a vote, as every year around this time millions of children of all ages will pay him a visit.

It all began many centuries ago in Asia Minor. There, a little boy was born to wealthy parents. They named him Nicholas. Little Nicholas had just about everything a little boy could want, until tragedy entered his life and the death of his parents, while he was still a young boy. Since his parents had been wealthy, Nicholas was left with a huge fortune on his hands, and rather than spend it on himself, he decided to give to needy persons. Being a rather shy and retiring little boy, Nicholas thought it better if people didn't know that he was the giver of these sums of money and gold, so he secretly left gifts for needy people by dropping them through open windows, and sometimes down people's chimneys.

This custom of dropping gifts down chimneys began to be such a habit that when the idea began to catch on, people started to hang up stockings by their fireplaces to receive whatever happened to be coming down the chimney that

## "Citizen Of The Year" Contest Voting Heavy During Past Week

Seventeen Residents Now Nominated For Award; Voting Deadline Set For Friday; Winner To Be Announced December 28

A flood of ballots received at the Times-News office this week indicates that interest is running high in the first annual "Citizen of the Year" contest sponsored this year by the paper. Public voting in the contest began the first of this month and ballots will be received at the Times-News office through next Friday, December 21.

From the large number of votes received at the office this past week, it is expected that the eventual winner will be determined by ballots turned in during this last week of voting.

So far in the voting, 17 local residents have been nominated for the award. One now nomination was received this past week. That one is for Mrs. Jesse W. Zachry, den mother for Cub Pack No. 306 of town. The remainder of votes received this week were divided among the other 16 persons, previously nominated.

See Ballot  
On Page 2

The complete list of candidates to date follows: Harold Brand, Mrs. Florence Moore, Commissioner Elmer S. Hyde, Seymour Grossman, Jesse Starkman, Miss Angela Chapman, Mrs. Edward Rochau, Edward O'Neil, James R. Golden, Miss Escher Adams, Mrs. J. J. Ryer, Rev. Peter R. Deckenbach, Robert Cook, Commissioner Kenneth D. Smith, William Allison Boyd, and Glenroy Strong.

At the close of voting next week, the man or woman receiving the greatest number of votes will be declared "Citizen of the Year" and will be appropriately designated. Winner of the distinction will be determined solely by the number of votes submitted by townpeople for their choice.

In order to vote for your candidate, it is only necessary to write the person's name on a post-card or letter, signed with your name and address, and mail to "Citizen of the Year" contest in care of this paper. Ballots are also printed in this issue of the Times and are available at several local businesses throughout town for your convenience.



Telling Santa just what they want are Eloise Riso and Charles Schoch.

## Chief Spatz Gives Tips On Safe Driving

Motorist should never relax their efforts to drive safely, Police Chief George R. Spatz said today, and they should make a special effort now to get their cars in shape for safe winter driving in the months ahead, for their own protection and for the safety of their families.

"It's surprising to see how many motorists are caught unprepared by snow and ice around this time of year," Chief Spatz observed. "It reminds me of the fellow who couldn't put storm windows on his home while it was cold but didn't put them on while the weather was mild because he didn't need them."

One of the chief goals of the coming "Back the Attack on Traffic Accidents" campaign will be to urge motorists to winterize their cars before winter really sets in.

Chief Spatz emphasized that winterizing a car means more than changing oil and putting in anti-freeze. "Of great importance to the motorist are the brakes, headlights, and other mechanical features of his car," he said.

Live windshield wiper blades, defrosters in good working order, proper headlights, good tire chains are all times the motorist can check so they'll be ready when he needs them.

National Safety Council tests proved that a pair of good tire chains are the best possible source of traction on traffic packed snow and ice. "Two full chains on rear tires are better than wishful thinking when the snow and ice conditions get bad," Chief Spatz advised. "They will help eliminate traffic tie-ups as well as accidents."

## PLANS FORMULATED BY CONFERENCE IN THURSDAY MEETING

Belleville Conference Will Elect New Officers And Pick Nominees For Board

The Belleville Conference met last night in the Recreation House in the second of a series of meetings to formulate plans for this year's Board of Education election. The meeting was conducted by William Bennett, chairman of the Conference. Bennett appointed a committee to nominate officers for the coming year. The committee will report back at the next meeting.

The Belleville Conference consists of 38 delegates, from organizations involved to participate, including PTAs, Legion Posts, Rotary Club, and all other non-political organizations of the town. The purpose of the Conference is to engage the interest of the best qualified citizens of the town in the management of the Board of Education, and recommend them to the public. There will be two vacancies on the Board of Education this year.

This will be the third consecutive year in which this Conference has functioned in this civic endeavor, Bennett said.

The first year the Conference was formed, they succeeded in bringing about the election of William A. Boyd as the first elected member of the Board. Boyd has since been elected president of the Board of Education. Last year the Conference was successful in electing three of their candidates, as the Board of Education expanded to a seven member Board. The Conference supported Mrs. Charles Cassidy, Dr. Frank DiRuggiero, and George Meagher last year. Meagher finished fourth in the

## "PACKAGE" PLAN AVAILABLE FOR HOSPITAL DRIVE

Local Residents Able To Donate Equipment For New Clara Maass

Microscopes, drying ovens and scores of other pieces of equipment that will be required for the laboratories of the new Clara Maass Memorial Hospital are among the "packages" that prospective benefactors may donate to the hospital.

The "package" plan is a phase of the merchandising technique employed in the presentation to the public of the Hospital Equipment Fund appeal. This program is being conducted under the general chairmanship of Raymond S. Perry, President of the Telephone and Radio Company.

Presently the hospital laboratory divisions - bacteriology and serology, chemistry, hematology and pathology - are functioning in a small area across the court from the main hospital structure at 16 Twelfth Avenue, Newark.

The divisions are so seriously cramped for space that expansion of their services cannot take place until the laboratories move to the new hospital building now nearing completion on the Newark - Belleville - Bloomfield boundary. As has been the case for years in the old building, the Hospital Museum will be an important unit of the laboratories at the new location.

This impressive collection of diseased tissues and parts of the human body removed during operations is used for instructional purposes by doctors and nurses. Considered one of the most comprehensive of its kind in the Newark area, the collection is now being processed for removal to the new building.

## Four Inducted By Local Selective Service Board

Four local young men were inducted into the armed services during the month of November by Selective Service Board No. 15 in Newark.

The four are William Gilbert, of 772 Washington Avenue; Thomas E. Delaney, of 180 Tapan Avenue; John F. Fugli, of 136 Floyd Street; and Aram Farshian, of 205 Overlook Avenue.

(Continued On Page Four)

## Padula Stresses Need For Economy In Fixing Budget

Mayor Establishes December 30 Deadline For Commissioners To Submit Department Needs

Economy is the theme stressed by Mayor Isadore J. Padula, director of revenue and finance, as Belleville Town Commissioners began work on their 1957 budgets this week. Drawing up of the individual department budgets is the preliminary step to formulating an overall town budget for the coming year.

Mayor Padula set the pattern last week in letters he sent out to Belleville Town Commissioners in which he called for economy in departmental requests for the 1957 budget.

The Mayor set a deadline of December 30 for each department director to submit his budget requests in full detail. That deadline has been set, he explained, "since the departmental budget must be studied by the Board of Commissioners in session with the finance director (Padula) and the town treasurer." He added, the composite of the five separate budgets can be reviewed by the auditor and presented to the residents and state officials in sufficient time.

**MRS. E. A. ROCHAU THROWS HAT IN ELECTION RING**  
Board Of Education Member Announces She Will Seek Re-Election  
Mrs. Edward Rochau announced this week that she will be a candidate for reelection to the Board of Education. She thus became the first person to definitely throw her hat in the ring for the February school election.

Byrne urged action on a petition

## King In Fair Condition

Hospital authorities at Mountsinai Hospital yesterday morning listed the condition of Commissioner Joseph King as fair. The Commissioner was taken to the hospital Monday morning after suffering a heart attack at his home. Doctors gave no indication of how long King would be hospitalized, but said he had spent a comfortable night.

Byrne reiterated that surrounding towns have comparatively few club licenses and noted that even the ABC can police these basement and neighborhood clubs. "You are human," he told Commissioners, "and subject to pressure, so the situation could get out of hand without a limitation."

In a conference with town owners last week, Commissioners indicated that all future cases would be determined solely on the merits of the individual case. Byrne said that such a course of action was too elastic.

In an informal poll of Commissioners taken at Tuesday's meeting by Charles Rossi, a tavern owner from 164 Belmont Avenue, Commissioner Harry J. Sullivan said he did not think that many of the abuses pointed out by Byrne existed in town. There is a close check kept here, Sullivan said.

He added that he saw no need for placing an absolute limitation on the number of private licenses, although he was not in favor of granting permits to neighborhood

(Continued On Page Four)

## Three Sets Of Twins At School No. 8



Continuing on our tour of twins throughout the Belleville school system, the Times-News photographer stopped at School No. 8 this week to catch a shot of the school's look-alikes. Standing in the usual order are James Bernaducci, Celia Bernaducci, Paul Shapiro, Charles Shapiro, Bruce Jackson, and Terrence Jackson.

## Post Office Announces New Holiday Schedule

In order to better handle the rush of Christmas mail and gift packages, the Belleville Post Office has announced a new schedule of longer hours to be in effect until December 24. New hours went into effect this week.

They follow:  
December 10 to 14—until 7:00 p.m.  
December 15, Saturday—until 7:00 p.m.  
December 16, Sunday—10:00 a.m. to 2:00 p.m. No carrier delivery service.  
December 17 to 21—until 7:00 p.m.  
December 22, Saturday—until 7:00 p.m.  
December 23, Sunday—10:00 a.m. to 4:00 p.m. One carrier delivery service.  
December 24, Monday—until 6:00 p.m.

## Woman Hit By Car

Mrs. Adelaide Knight, 81, of 17 Prospect Place, suffered bruising of the legs and back Monday when she was struck by an auto while crossing William Street near Washington Avenue. Police said the driver of the car was Mrs. Josephine Lotruglio, 45, of 12 Parkside Drive. Mrs. Knight was turning left from William Street into Washington Avenue and she did not see Mrs. Knight in time to stop.



## Times-News "Citizen of The Year" Contest

I nominate .....  
as my choice to receive the 1956 "Citizen of the Year" award.

Reasons (optional): .....

Additional comments may be enclosed in letter.

Mail To: ..... Signed .....

"Citizen of the Year" Name .....

Belleville Times-News

Washington Avenue Address .....

Belleville, N. J.

## Christmas Program Planned Monday At School No. 8

The Christmas entertainment of School No. Eight will be held in the School Auditorium at 8:15 p.m. Monday. The combined third grades, under the direction of Miss Margery Gross, Mrs. Carmella Stefanelli, and Miss Ann Marie Stefanelli, will present a playlet entitled "The Unhappy Toys". The main characters are Vickie Lou Holloway, Laura Ruppel, Diana Dring, Judy Balatos, Annette Cleffi, John De Feo, Gary Creditor, Scott Munro, Michael

Rose, Jeffrey Perkins, Robert Franklin and Arthur Magnus. The school orchestra will play three numbers - "Away in a Manger", "Silent Night", featuring the string section, and "It Came Upon a Midnight Clear".

The seventh and eighth Grade Girls Glee Club, directed by Miss Margaret Bunce assisted by Miss Kathryn Conklin, will sing "The Angels Song", "The Echo Carol", and "It Came Upon a Midnight Clear".

The Boys' Choir composed of fifth and sixth graders, directed by Miss Eleanor Arthur, will sing "Masters in this Hall", "Angels We Have Heard on High", and "Let our Gladness Know no End". The fifth and sixth Grade Girls' Choir directed by Mrs. Arthur will sing "Long, Long Ago", "Lullaby", and "Away in a Manger".

The combined choruses will sing "The Birthday of a King", "It's Beginning to Look a Lot like Christmas", and "Silent Night".

Georgene Mitchell will sing a solo entitled "O Holy Night". The splendid Christmas decorations throughout the halls of the school were made by Mrs. Carmella Stefanelli and Mrs. Carmela Fitzhenry.

## Connie Francis In New Movie



Local singer, Connie Francis, now appearing in "Rock, Rock, Rock", musical rock 'n' roll movie which opened at Loew's in Newark on Wednesday. She began her musical career with her hit recording of "Freddie" a year or so ago.

## United Mechanics Meet At Recreation House

The Belleville Council No. 163, of Junior Order United American Mechanics, has announced that meetings of the group will be held at the Recreation House on Jerusalem Street every third Thursday of the month. The group previously met on Stephen Street.

## Former Members Invited To School PTA Party

The PTA of School No. 2 will hold its Christmas party on Tuesday at 8:00 p.m. All former officers and members of the group have been invited to attend. Admission will be a 50 cent exchange gift. In charge of decorations and refreshments will be Mrs. M. Gonello and Mrs. J. Spino.

## HUNGARIAN RELIEF FUND GROWS AT RED CROSS UNIT

A total of \$64 has been collected by the Belleville Chapter of Red Cross, to date, for the Hungarian Relief fund program. It was announced by Miss Marjorie Lealy, chapter head, this week.

She also announced that the local chapter of Red Cross Juniors will also help the fund. A committee has been appointed by the group to purchase several warm cap coats, to be sent abroad for refugee children.

On national level, a directive just received from the headquarters of Red Cross disaster specialists is being flown to Austria, to operate camps for refugees. It is anticipated Red Cross will have direct responsibility for the emergency needs of as many as 35,000. In addition there is the operation at Camp Kilmear consisting of welfare services, communication, comfort articles, motor service and other essential for the 25,000 refugees. Sixty staff members are assigned to this operation and 250-300 volunteers work three shifts daily.

## Mothers Plan Pre-School Yuletide Party Thursday

On Thursday, December 20 at 10:00 a.m. the Belleville Recreation Department Mothers' Club for the pre-school party group will give a Christmas party for the children at the Recreation House. Refreshments will be served by Mrs. Ruth Kantor, Fred Vico and Nancy Dietrich who are members of the party committee.

## Hadassah Has School Program On Thursday

Belleville-Nutley Chapter of Hadassah will hold a back to cheder night for members, with Mrs. Sylvia Hoch as teacher, on Thursday at Congregation A. A. Mrs. Hoch will teach volunteer students from the audience. Israeli songs will complete the lesson. The group will meet at 8:30 p.m.

## Local Man Serves On Building Committee

Serving on the home planning committee of the Eastern Star Home and Charity Foundation is Samuel Marcus, of 842 Washington Avenue. The group plans to construct a home for the aged.

## Campus --- --- Corner

Paula Thaler, daughter of Mr. and Mrs. David Thaler, of 63 Belmont Street, a senior at Rutgers Newark College of Arts and Sciences, will take a course final exam on television this Sunday.

Miss Thaler and three other State University students will try to answer questions by Professor Frederick T. McGill, Jr., on TV Channel 13 at 1:30 p.m. Sunday.

The four students will be studio representatives of an estimated 125,000 viewers who have been substituted for the stockings television course in pioneers of American prose and poetry.

An English major at the Rutgers Newark, Miss Thaler and her fellow students will be asked questions about American literary pioneers from Washington Irving to Stephen Crane.

Peter C. Palmieri, of 18 Arthur Street, is among the more than 5,500 students enrolled at the University of Dayton this semester. Palmieri, a graduate of Belleville High School, is a sophomore in business administration.

Students from Centenary Junior College for Women, Hackettstown, who will begin their Christmas recess on Wednesday, December 19, returning to the campus on Monday, January 7, are: Misses Grace Abbott, daughter of Mr. and Mrs. Emerson Abbott, of 11 Celia Terrace, Both Hyde, daughter of Mr. and Mrs. Elmer S. Hyde, of 43 Rossmore Place; Patricia Scott, daughter of Mr. and Mrs. Joseph Scott, of 166 Tappan Avenue, and Carol G. New Marvin Wallace, of 264 New Street.

Miss Marilyn Woods, daughter of Mr. and Mrs. Kenneth G. Woods, of 71 High Street, has been named co-chairman of the annual Spring Week activities which will be held May 6-11 at Ursula College, East Orange.

Miss Woods, a junior at Ursula is vice-president of Phi Omega Chi sorority and is an active member of the college choir and SCA.

Renee Lempert, daughter of Mr. and Mrs. Louis Lempert, of 13 Jerusalem Street was recently elected to Phi Kappa Phi, national honorary society at Syracuse University. Miss Lempert, a fashion merchandising major at the school, is also a member of Omicron Nu, national home economics honorary society.

Miss Elsie Bergersen, daughter of Mr. and Mrs. Arne Bergersen, of 189 Garden Avenue, is co-author of a one-act, play to

## Reading's Not Dead At Shawger School



Engrossed in the available reading matter at the James G. Shawger School's book fair, held last week are students and teachers. Chairlady of the fair, Mrs. Mary Limpert, second from left, helps young readers, as does Mrs. Katherine Barbore, right, PTA president. More than 1,200 books were sold at this first book fair held in town.

## School Five PTA Has Party At School Three

The PTA of School No. Five will meet in the auditorium of School No. Three on Jerusalem Street, on Monday at 8:15 p.m. The group will be entertained by the glee club, a pantomime play and the school orchestra. The change of meeting place is due to a change being made on School No. Five's auditorium.

## Knox Urges Scouts To Make Reservations Soon

Horace Knox, chairman of Belleville's Scout Jambores committee, has announced that local troops and explorer units should get their reservations in as soon as possible. The national jamboree will be held at Valley Forge, Pa. next July, and the local quota must be filled soon.

be presented tonight at Caldwell College by the junior class. Miss Bergersen also appears in the play and is in charge of costuming.

Another Belleville resident, Miss Susan Walsh, daughter of Mr. and Mrs. Henry F. Walsh, of 7 Branch Brook Drive, is in charge of scenery design for the sophomore play, "The Broken Sherd.".

EAST UTILITY GARAGE  
C. A. FANELLI, Prop.  
Body and Fender Repairing  
Expert Auto Repairing  
Phone NUley 2-646  
45 Washington Avenue, Nutley, N. J.

ALBERT H. BORMANN HEATING  
COMMERCIAL INDUSTRIAL RESIDENTIAL  
45 Mertz Avenue PLYmouth 9-3247

CHRISTMAS SPECIALS SAVINGS UP TO 20%  
Christmas Tree Lights - Safety Plug  
Our Price  
Indoor 7 Light Reg. \$2.94 \$2.35  
Outdoor 7 Light Reg. 3.90 3.12  
Candles - Candeliers With Add-On Plugs  
Our Price  
10 Inch Candle Reg. \$ .80 \$.68  
3 Light Candelier Reg. 2.70 2.16  
LIGHTS - GIFTS - TOYS DECORATIONS  
Also Greatly Reduced  
White Oaks Hardware  
FURNITURE • HOUSEWARES • HARDWARE • TOYS  
76 Union Ave. NU 2 4987 Nutley, N. J.

## RED CROSS TAKES 70 PINTS OF BLOOD

Seventy pints of blood were collected by the local Red Cross Chapter, at the high school on Friday. Donating were members of four local industries and five private townships.

Thirty-nine representatives from Wallace and Tiernan donated, 18 from each of Eastwood Neally and Federal Industries; 17 from Westinghouse, and eight from Eastern Tool.

Volunteers serving under the direction of Mrs. Marion Poppel and Mrs. Winifred Tucker were: Mrs. Hazel Breen, Mrs. Ethel Price, Mrs. Hilary Dempster, Mrs. Jean Gurney, Mrs. Jean Foster, Mrs. Doris Irvine, Mrs. Edith De Niki, Mrs. Alma Rose, Mrs. Virginia Schumacher, Mrs. Grace Orth.

Also Mrs. Irma Ryer, Mrs. Alice Hiltnerhaus, Mrs. Helen McGowan, Mrs. John McCarthy, Mrs. Shirley Mc Elroy, Mrs. Jean Robinson, and Mrs. Kay White.

Assisting were the Junior Red Cross, high school boys and Red Scouts who helped load and unload the trucks.

## OUR CLASSIFIED ADS

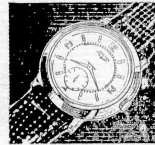
## BRING QUICK RESULTS

School No. 9 in town, while the school is with the Jersey Unit Trust Company, and Mrs. Oschwald is Tully's secretary at his local office.

## Give only the FINEST for your Heart's Desire



WITTNAUER, Ultra-smart 14K gold case, yellow or white. Matching expansion bracelet. \$71.50 FTL



LONEINES ALL-PROOF. Protected against water, shock, rust, dirt, magnetism and misreading. Breakage. \$79.50 FTL

OPEN EVERY NITE  
HARTDEGEN  
510 N. 2nd St. NUTLEY. FREE PARKING  
Roads are Open & It's Easy to Park  
ONE YEAR TO PAY IF YOU WISH!

## Face Is

(Continued From Page One)

night. In some countries, particularly in Scandinavian lands, shoes are put on just before he dies. This custom seems to have carried over to this country.

To get back to Nicholas, after he had finished getting rid of his inheritance, he began to travel all over the world, or what was then known of it. He travelled on ships, and according to reliable sources, sailors he performed many miracles while on board.

After travelling for many years, he was made Archbishop of a province called Myra. There he ruled wisely for many years, and after his death, 360 years after his death, to be exact, Nicholas was made the patron saint of Russia. Today he is also known as the patron saint of bankers, navvies, children, maidens, children, mariners, scholars, and alas - thieves.

St. Nicholas was brought to America shores by Dutch settlers, many years before anyone ever dreamed he'd be working for some of our larger department stores in a few hundred years. He began to change somewhat when he arrived.

Historians tell us that Nicholas of Asia Minor was a somewhat pale and scholarly type. Also, people in the old country celebrate December 6 as St. Nicholas Day. Our ancestors changed that too. And we hear that in some European countries, Santa is supposed to punish the bad children, as well as rewarding the good ones. Somehow he never seems to find any bad

## Tully

(Continued From Page One)

children as they all become angels just about when he's due. This custom seems to have carried over to this country.

Locally, you'll find that grand old post at the Boston Store, on Washington Avenue, but we hear tell, that he gets around quite a bit, in fact you may run into him just about anywhere around this time of year.

Mrs. Rochau, who heads the woman's division, is a member of the Board of Education. She has served as acting president of the Community Chest, and is active in Girl Scout work, church organizations, and other civic projects.

Mother's March chairman Mrs. Long served as president of the Belleville Girl Scout Council and is now a member of the area planning board. She is a member of the Juvenile Conference Committee, the Woman's Club, and has worked on the Community Chest, Tuberculosis, and Clara Mass Fund Drive.

Mrs. Spray is principal of



## Present...with a future

You give more than money when you give a savings account in an Insured Savings and Loan Association. You give someone a head start on the savings habit...on getting many other worthwhile things in the future. And, as over seventeen million Americans know, saving in an Insured Savings and Loan Association means important advantages. Excellent returns from your money is one advantage. Efficient, forward-looking service from men who know how to make your dollars work harder for you is another.

And, of course, your money is safe because in Insured Associations your savings are protected by sound management and substantial reserves. They are insured up to \$10,000 by the Federal Savings and Loan Insurance Corporation—an agency of the U.S. Government. These are the reasons why Americans

are putting more of their savings account dollars into Insured Savings and Loan Associations than anywhere else! And, with over \$38 billion of assets, these Insured Associations are a great force in encouraging thrift and home ownership. You can invest in the future with as little as \$1 to \$5. Plan now to give someone in your family (or yourself) this "present with a future." Why not start with a part of your Christmas bonus...watch it grow...more quickly than you'd think.



THIS MESSAGE IS SPONSORED BY THE INSURED SAVINGS AND LOAN ASSOCIATIONS IN YOUR COMMUNITY WHICH DISPLAY THIS SIGN: ©The Savings & Loan Foundation, Inc., 1111 E Street N.W., Washington 4, D. C.

## De Witt Savings and Loan Association

463 Washington Avenue, Cor. Tappan Avenue, Belleville, N. J.

PLYmouth 9-5264

## Obituaries

BRADY, Miss Anna, 77 Center Street, died Dec. 10. Age 67.  
BURNS, Miss Margaret, 57 Prospect Place, died Dec. 8. Age 75.  
GRUCHACZ, Edmund M., 1618 Howard Place, died Dec. 8. Age 46.  
PARIS, Carl Jack, 292 Branch Brook Drive, died Dec. 11. Age 52.  
ROMANELLO, William T., 24 Gracie Avenue, died Dec. 5. Age 66.  
UTTRACCHI, Louis, 32 Hornblower Avenue, died Dec. 7. Age 81.

## HOLZMAN ELECTED TO HEAD DISTRICT BOY SCOUT COUNCIL

Bernard Holzman was elected district chairman of the local council of the Robert Treat Council of Boy Scouts, at the group's annual meeting held at the high school last week. Also elected were: vice-chairmen Charles M. Nutt and Elwood P. Russell; district commissioner, E. Douglas Wadsworth; assistant district commissioner, Leslie W. Finch.

Elected members at large were: Frank Spotts, Dr. Frank Durkee, Irwin Fulk, George Kierman, Frank McFadden, Henry Minisani, Harry Nees, David Robbins, Evan H. Thomas, Herman Entin, Sidney Hollander, George W. Malek, Harold Fawcett, Jesse Starkman, William E. Pirk and Horace Knox.

Appointed to committee chairmanships were: Henry Minisani, Harry Nees, Harold Fawcett, George W. Malek, Jesse Starkman, William E. Pirk, and Horace Knox.

Members of the district committee elected by the institutions sponsoring Scouting units in Belleville are: Wesley Methodist Church, Eldon Shaffer; Bethany Lutheran Church, Hugh W. Pater; Walter Kiddie Co., Remy Butting; PTA James G. Shawger School, Ralph Rissol; PTA School 5, W. Herbert Orth; Montgomery Presbyterian Church, Uno Anderson; PTA School 7, Stephen Martin; PTA School 8, Norman Reeves; PTA School 1, Harold W. Bude; Second Baptist Church, Harland Holt; Wallace and Tiernan, Mrs. Sylvia Hoch as teacher, on Thursday at Congregation A. A. Mrs. Hoch will teach volunteer students from the audience. Israeli songs will complete the lesson. The group will meet at 8:30 p.m.

RADIO • TV CAR RADIO PHONOGRAPH REPAIRS  
All Work Guaranteed  
Call NU 2-7681  
Jersey TV & Music Shop  
203 Franklin Ave. Nutley

JOIN OUR CHRISTMAS CLUB

Peoples National Bank and Trust Co.

Interesting and Unusual Giftware  
Gifts for the "person who has everything"  
at the  
Scandia Delicatessen  
86 Union Avenue Nutley  
Phone NUley 2-6090  
Imported and Domestic Delicacies for  
Hors d'Oeuvres, Parties, and Midnight Snacks  
Complete line of Scandinavian Foods  
Catering: Smorgasbords  
Home Made: Salads, Swedish Meatballs, Liver Pate,  
Sausage, Roasted Meats, and Shrimp Salad  
Store Hours: Daily 9:00 A. M. - 10:00 P. M.  
Sundays 9:00 A. M. - 1:00 P. M. - 4:30 P. M. - 10:00 P. M.



# DR. JACOBSON IS HONORED TONIGHT AT TEMPLE SERVICE

Dr. Benjamin Jacobson, of 509 Washington Avenue, will be honored during services tonight at Congregation Ahavath Achim. Services will begin at 8:30 p. m.

Dr. Albert L. Reab, rabbi of the congregation, will officiate. A special program has been prepared by Samuel J. Kogan in honor of Dr. Jacobson's thirty years of service to the community. Dr. Jacobson is immediate past chairman of the Board of Trustees; past president of the Congregation; past president of the Progress Club; and served on numerous other committees.

Participating in the special program will be: Charles Rosen, Temple president; Henry W. Zukoff, past president; Kogan, and Rabbi Reab.

An "Oneg Shabbat" will follow the services in the Temple auditorium.

# Layton Bags Deer Early In Hunting Season

The deer hunting season in New Jersey began at 7:00 a. m. on Monday morning. Thirty minutes later, Robert Layton, of 74 Rossmore Place, had bagged a six pointer, weighing 246 lbs. The animal was shot in Morristown, after Layton had been all over the states of Maine and New York with nary a deer in sight.

By 9:00 a. m. Layton had arrived at the office of the Times-News to report the kill, "and my wife won't even allow the thing in my house," he told the staff. "I'll probably have the head mounted though."

"Not only versatile at deer hunting, Layton bagged two holdup men within the last two weeks. The latest of the two occurred last week."

# Five Entertain Evening Woman's Club Party

The evening membership dinner of the Woman's Club on Wednesday evening at the clubhouse. Entertaining the group will be Diane Vanderbilt, daughter of Mrs. Gary Vanderbilt, Mrs. E. M. Beck, with a book review, Richard Ebert, fifth grade trumpet player, and singer, Miss Leslie Gottlieb, accompanied by Miss Viola Weisgold. G. o. n. p. will follow the entertainment.

Members will also gift wrap articles for Christmas, to be given to the chronically ill in Essex County Isolation Hospital. Hostesses will be Mrs. Harry Fallows, Mrs. George Ward and Mrs. Richard Taggart. In charge of selling holiday candles for the group will be Mrs. A. Bedarbis. Proceeds will go to the Clara Maass Hospital.

# Tri-Town Group Meets On Thursday In Nutley

A group contribution to the Clara Maass Hospital fund will be discussed at the December meeting of the Tri-Town Business and Professional Women's Club of Belleville, Bloomfield and Nutley. The group will meet on Thursday at 7:00 p. m. at Vincent Methodist Church in Nutley. A program to follow the dinner and business meeting, has been arranged by Miss Gertrude Struble, Beatrice Heathcote, Alice Pathe and Eleanor Storor.

Members are asked to bring canned food and money donations for Christmas baskets to be distributed in the three towns.

# costs so little to phone anywhere

Cleveland..... 85¢  
Richmond..... 70¢

From NEWARK after 6 PM and Sundays 3 min. station rates.  
50¢ tax not included.

**DIRECT TO CENTER OF NEW YORK**  
PORT AUTHORITY TERMINAL



**The Best Way DeCamp BUSES**

Frequent, convenient service. Present, relaxed riding in fast, giant buses direct to the heart of New York City. Ride in comfort going to New York. No nuisance of driving, no parking problem, no changing to ferry or tube. Save time and money.

Timetable Information  
Gregory 1-1200 Clifton, N. J.

**DeCamp BUS LINES**  
NEW JERSEY'S FINEST



House Dog visits at School No. One, as four eighth graders entertain at last week's talent show. Youthful rock 'n' rollers left to right are: Paul Veltrio, Joe Marchese, Gordon Sullivan and Eugene Stefaneli. Proceeds from the show, which featured over 100 entertainers, were donated to the Clara Maass Hospital fund.

# High School Senior Weds Local Man On Sunday

Married at St. Mary's Church, Nutley, on Sunday, were Miss Jo-Ann Beatrice Spasini, daughter of Mr. and Mrs. Joseph Spasini, of 64 Forest Street, and Ralph Anthony Yannece, son of Mr. and Mrs. Anthony Yannece, of 34 Columbus Avenue. Rev. John Golding officiated at the ceremony which was followed by a reception at Monte's in Newark.

The bride, who was given in marriage by her father, was attended by Miss Linda Ibbett. Best man was Frank Tassielli.

The bride wore a white chiffon ballroom length gown, with a white sash and carried a white orchid on a prayer book.

The bride's attendant wore a gown of pink chiffon trimmed with satin. She carried an old fashioned bouquet.

The bride is a senior at Belleville High School. Her husband is a graduate of Belleville High School. He is a teacher of music.

After a two - week trip to Washington, D. C., the couple will make their home at 34 Columbus Avenue.

# Junior Woman's Club Has Children's Party

A children's Christmas party will be held by the Junior Woman's Club tomorrow afternoon at the clubhouse, at 51 Rossmore Place. Santa will distribute gifts. Box lunches will be served. Games and singing will follow. Chairlady Mrs. Emmet Covello will be assisted by Mrs. Nathaniel Barrish.

# Material Needed For Cancer Dressing Unit

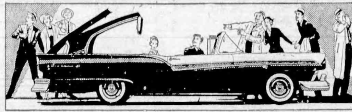
Miss Esther Adams chairman of the cancer dressing unit of the Woman's Club has announced that the group needs materials for making dressings. All clean white material such as sheets, pillow cases, table cloths measuring 20 by 17 inches can be used. The group meets every Wednesday.

# Going to the Auto Show?

"You ain't seen nothin' "



until you've seen FORD'S



RETRACTABLE HARDTOP



World Premiere DEC. 8

It's a hardtop! It's a convertible! See the steel top disappear beneath the rear deck of America's first Retractable Hardtop. It's another Ford first.

SEE IT AT THE COLISEUM  
DECEMBER 8 THROUGH 16

# You Ain't Nothin' But ...

# Social Notes

Visiting in town for the holidays will be Lt. and Mrs. John McNish and their son, Michael. They will stay with Lieut. McNish's mother, Mrs. Madeline McNish, of 31 Malone Avenue. After their stay in town, they will go to New London, Conn., where he will be attached to the submarine Naval Base, there.

Chaperones at the Lambda Chi Alpha fraternity at Rutgers University in New Brunswick last weekend, were Mr. and Mrs. William Chapman, of Belmont Street. A couple attended the "Jazz Goes to Bermuda" weekend, where Mike Ellington, the Doc Elliot quartet and the Dixieland All-Stars. The Lambda Chi Alpha fraternity, to which their son Bill belongs, won first prize in the house decorations contest. The weekend was sponsored by the Interfraternity Council.

# Gift Project Is Sponsored By Holy Namers

A special Christmas project is being sponsored by the Holy Name Society of St. Peter's Church, according to its president, James McConnon. The group will present individual gifts to the 114 girls at St. Anthony's Orphanage in Kearny. The gifts, which have been brought, wrapped and sent by individual members of the society, will reach the children no later than next Wednesday. Holy Name members are asked to bring their gifts to St. Peter's Rectory as soon as possible.

McConnon pointed out that this year, in order that children would receive suitable gifts, each member of the society was given the name and age of a child. He was then responsible for the gift going to that child.

Rev. James F. Heavey, Holy Name moderator, has announced that next year, the group hopes to sponsor a Christmas party at the orphanage, as well as continuing this year's gift program.

# WOMAN'S CLUB HAS ANNUAL PARTY

The fine arts department of the Woman's Club will hold its annual Christmas party on Monday at 1:30 p. m. at the clubhouse. Entertainment will be by the Baker's Dozen, a group of high school singers under the direction of Dr. Samuel Peck. Mrs. Ronald Beck will review Edward Streeter's humorous book "Merry Christmas Mr. Baxter." Mrs. Karl Hiltnerhaus, hospitality chairman, will serve refreshments. Mrs. T. G. Graves and Mrs. W. Douglas Clark will pour.

Mrs. Max N. Schwartz welfare chairman has urged all members to get unwrapped Christmas gifts to her before December 17. The gifts will go to patients at Essex County Isolation hospital and to needy children.

# Wesley Men Entertain E. O. Veterans At Party

Ten wheelchair patients will be the guests of Wesley Men's Club at its Christmas party on Monday. The patients from East Orange Veterans Hospital, will dine with the men at 6:45 p. m. in the church dining hall. Chief, Clifford Kraft is in charge of the menu. Harry Tice will present entertainment and Santa Claus will present gifts.

# Colony Club Has Party For Kearny Orphans

Thomas C. D'Avella, chairman of the Christmas party of the Colony Club has announced that the fourth annual party for the children of St. Anthony's Orphanage in Kearny will be held on Sunday. Santa Claus will present each child with clothing and a toy. Refreshments and entertainment will follow.

PI. 9-1497

EYES EXAMINED

**Dr. M. Roachvarg**  
OPTOMETRIST

M., T. & Fri. 9:30-8  
Tues., Thurs. & Sat. 9:30 to 6  
And by Appointment  
Closed Wednesday  
132 Washington Avenue  
Belleville

# Gantner's

HARDWARE DEPARTMENT STORE

Buy The Best And Save  
Buy Noma Multiple Light Sets  
With Safety Fuse Plug.

	Spec.	List
7 Light Indoor Set	\$2.25	\$2.95
15 Light Indoor Set	4.45	6.20
25 Light Indoor Set	7.49	10.60
7 Light Outdoor Sets	2.75	3.90
15 Light Outdoor Sets	5.95	8.10
25 Light Outdoor Sets	9.75	13.40
G.E. Light Bulbs:		
C-6 Series 8c Ea.		
C-7½ Multiple 12c Ea.		
C-9 Outdoor 15c ea.		

Save On All Decorations — Shop Gantner's  
Open evenings 'til Xmas  
— Free Parking —  
160 Franklin Avenue, Nutley  
NUTLEY 2-6622-3

# Miss Burke, George Lytle Are Married At St. Peter's



Mrs. George V. Lytle

At a Nuptial Mass in St. Peter's Church on Saturday, Miss Mary Patricia Burke, daughter of Mr. and Mrs. Patrick J. Burke, of 78 Garden Avenue, became the bride of George Vincent Lytle, son of Mr. and Mrs. William J. Lytle, of Verona. Rev. Francis Ignacius performed the ceremony for the couple, who also received the Pappal blessing. The ceremony was followed by a reception at The Moresque in West Orange.

The bride was in marriage age by her father. Maid of honor was Miss Edith Scudese. Bridesmaids were Miss Margaret Lytle, sister of the bridegroom, and Mrs. George Verian.

The bridegroom was attended by his three brothers, David Lytle, as best man, and John and William Lytle, as ushers.

The bride is a graduate of Newark State Teachers College. She also did graduate work at Seton Hall University. At present, she is on the faculty of Oak View School of Bloomfield. Her husband is a graduate of Seton Hall University, served in the U. S. Navy, and is now associated with Superior Sink Tool Company of Verona.

After a two-week trip to Nassau, the couple will live in Bloomfield.


# ELEPHANTS POLAR BEARS N' EVERYTHING



In starting your Christmas Club account you are providing not for a rainy-day but for a sunny-day — to make a Merry Christmas merrier.

The Christmas Club check will insure no late Christmas bills to spoil the Christmas spirit.

**PEOPLES NATIONAL BANK AND TRUST COMPANY**  
237 WASHINGTON AVENUE  
BELLEVILLE, NEW JERSEY



Belleville Branch



**You'll Really Be Surprised  
At How Much You Can Save**

It's Here - - - The Magic of Stereo Sound on Tape!

**Come In And Hear The VM  
HI - FI Stere-o-matic Tape  
Recorder**

**The Finest Recorder On The Market**

**Authorized Factory Service**



# SPOTLIGHT on SPORTS

by Bob Gorlin

## Belleville Boys Do Well In College Games

It was a pretty good Saturday night for three Belleville residents, now stars with their respective colleges. Two of the boys, Gordon Galtore and Riehle Veith, are Belleville High School products, while the third member is Al Wisniewski, who learned his basketball under Wilbur Ruckel at North Arlington High.

Galtore is a senior at Lafayette College and a member of the starting five. Wisniewski is co-captain of the Ursula College basketball team, and Veith, who is only a sophomore at the University of Niagara, saw quite a bit of action in the varsity game against Seton Hall.

Galtore and Veith were members of winning combinations as Lafayette defeated New York University, 88-79, at Madison Square Garden, and Niagara took the measure of Seton Hall by an easy 83-63 score at the Buffalo Auditorium. Although Wisniewski's Ursula five went down to defeat, they almost recorded a major collegiate upset when the Vikings played host to heavily favored Princeton University and led throughout most of the contest.

It was a big day for Ursula as the East Orange institution plays its first collegiate contest in its new \$500,000 field house. Princeton's basketball team was pressed to the limit for 35 minutes before subduing a fire-up Ursula team, 59-48 before a standing room crowd of 2,200 in Viking Memorial Hall. The game marked the first sports event between the two schools. Ursula, playing with a severe height disadvantage, outlasted the Tigers and led, 27-18 at the half.

All Wisniewski did was to lead both teams in scoring with 15 points. He took only nine shots from the floor and converted four. In the foul shooting department Wisniewski converted seven of nine attempts. Wisniewski, a senior at Ursula moved to Belleville two years ago. He was high up in the All-State selections while playing for North Arlington four years ago.

A teammate of Wisniewski's at Ursula is little Joe Gasperi, who was a constant thorn to Belleville High teams of a couple of years ago when he cavorted for Bloomfield High. One of the big factors in deciding the outcome in favor of Princeton was the play of another former Essex County star, Dave Fulcomer, of Montclair. Now a junior at Princeton, Fulcomer used his six-foot, six-inch frame to superior advantage under both baskets. He finished the night with 13 points and came through with several big baskets in the final period.

Galtore enjoyed a good night with Lafayette. The victory over N.Y.U. marked the first time that a Leopard basketball team was victorious in Madison Square Garden in 10 years. Lafayette had dropped 12 in succession to New York City teams in the spacious arena. While many Belleville sports fans went over to the Garden to see Galtore in person, the Lafayette-N.Y.U. was also on television.

Galtore, a pupil of Blue and Gold coach "Jitty" Wische, tallied 12 points for the victorious Leopards. He hit on four of 10 shots taken from the field and made four out of six foul tries. Two Essex County boys led Lafayette. Stu Murray, of West Orange, and Tony Mack, of Bloomfield, finished with 18 points each.

As for Veith it was a big night as he helped Niagara to defeat highly touted Seton Hall. The South Orange college wanted Veith to attend Seton Hall and play basketball for the Pirates but Veith decided in favor of Niagara as he follows right in the footsteps of another Belleville product, Jim McConnell.

Last year Veith led the freshman team in scoring but it wasn't expected that he would see too much action when Niagara took on such stiff opposition like Seton Hall. Veith made two baskets on three attempts and added two foul points in four tries.

All in all it was a good night for the Belleville trio. You'll be hearing a lot about the success of these three on the hardwoods as the court season progresses.

## Local Cagers Rack Up Second Win, Beat Garfield 62-54

Favored To Beat Tornadoes  
Of Orange In First Essex  
County Competition Tonight

By Dave Thaler

Belleville bid farewell to Passaic County competition Tuesday, by defeating Garfield, 62-54, and tonight the Bell boys get their first look at the brand of basketball in Essex County, when they travel to Orange to encounter the oft-beaten Tornadoes. Belleville will be putting their 2-0 record on the line, but should have little difficulty with Orange. The Blue and Gold showed a great deal of difficulty in their second victory of the year, and appear to have too much for their hosts.

The Garfield game saw the Bell boys put a mild surprise when they abandoned their zone defense for an all-court press. They confused themselves more than Garfield though, and fell behind, 9-3.

Then the Blue and Gold court-men went back into their zone, and slowly overtook the visitors. Don Klein, Bellboy captain, was fouled as the buzzer ending the first quarter sounded. Klein sunk one of two foul shots, and pushed the Blue and Gold into a 14-13 lead.

Belleville led from that point on. In the second period, six different Belleville men contributed to the point total. Tom Candura's drive made it 16-14. Klein's jumper made it a four point lead, and Charley McFadden, Fred Riccio, Ray Kimble and Jack Cullen contributed two markers each to give Belleville a five point lead at the half, 26-21.

Garfield's offense was dependent upon the guards cutting to the opposite side and taking a pass from the forward. This usually left one Bellboy guard with two men to watch, and Garfield was getting exceptionally good shots.

In the second half, Belleville dropped a forward back to the foul line, preventing the Garfield guards from cutting. Garfield dropped far behind in the third stanza. Tom Candura got hot and sunk eight straight to widen the gap. When the quarter had ended, the Bellboys had a nine point lead. Garfield, although considerably bigger than Belleville, was letting the boards be dominated by the Blue and Gold — particularly Klein. The 6'1" junior looked like a human pogo stick as he continually swept both sides of the court.

Although he was dominating the boards, Klein was missing quite a few shots from under the basket. But in the fourth period he put the easy shots in, and, with Jack Cullen, and Frank D'Angelo, wrapped up the game.

Garfield managed to come within four points from Cullen and Klein put their mates at a safe distance with four points in a row.

Klein and Cullen were high men for Belleville with sixteen points. Tom Candura also hit double figures, with ten markers.

Tonight's game shouldn't raise too much of a problem for Belleville, but if Klein has an off night under the boards the Bell boys could be in trouble. Either the Belleville captain has dominated the boards to such an extent that his mates have not had the chance to show that they can also pull down their share of rebounds, or Belleville has no depth in that department. It would be interesting to see who controlled the boards if Klein were not there, for in the first two games he has gathered in more than 75 per cent of Belleville's rebounds.

The box score follows:

Belleville	G	F	Pts.
D'Angelo	4	1	9
Cullen	6	4	16
Kimble	0	3	3
Cetrulo	1	0	2
Klein	5	6	16
Riccio	1	0	2
MacFadden	1	0	2
Candura	5	0	10
Pinadella	0	2	2
Dalton	0	0	0
Totals	22	16	62

Garfield	G	F	Pts.
A. Pra	7	5	19
Ventura	4	2	11
R. Schley	2	0	4
E. Schley	0	5	5
Ludwig	1	0	2
V. Pra	2	1	5
Jagiello	1	0	2
Azzara	1	0	2
Totals	20	14	54

Garfield	G	F	Pts.
Belleville	14	12	19

## Local Man Graduates With Honors From RCA

Joseph F. Springer, Jr., of 175 Belleville Avenue, was recently graduated with honors from the RCA Institute School of Education. He attended the radio and television broadcasting course.

## Wins Varsity Berth



Ed (Roger) Weinstein, of 57 Forest Street, who played with the 1954-55 and 1955-56 Belleville High School basketball teams, has won a berth in the Newark Rutgers varsity five. Weinstein is a freshman pre-pharmacy student at the State University Newark College of Arts and Sciences.

## FORMER BHS CAGE STAR PLAYS FOR NEWARK RUTGERS

A former Belleville High School basketball standout, Ed Weinstein, of 57 Forest Street, will help lead Newark Rutgers through its court campaign this season.

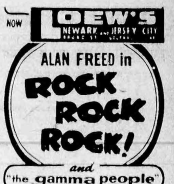
Weinstein is a freshman pre-pharmacy student at the State University Newark unit. "Bomber" coach Hank Bodner has given him a varsity berth as the team enters its 21-game schedule.

Bodner considers the 6-2, 185 pound Weinstein "a good rebounder whose tap-in ability and good corner shot will certainly help us."

If there is more pressure on a college ballplayer than a high school cager, Weinstein ought not to feel it. While playing for the Bellboys in 1955 he participated in that marathon, triple overtime game against West Side in the Essex County Tournament.



Peoples National  
Bank and Trust Co.



So They Say



... until someone suggested The Franklin Casino. "Fine!" she said, "I should have thought of that in the first place!"

So They Say  
AT THE  
FRANKLIN CASINO

338 Franklin Avenue  
Belleville  
PL 9-2111

## LITTLE LEAGUE AWARD CEREMONY

Tomorrow is the big day for Belleville's near two hundred Football Little Leaguers when all of the players, coaches, cheerleaders and twirlers convene at the Elks Club for the Recreation Football Little League Award Ceremony. The festivities will get under way at 2:30 p.m. tomorrow.

Commissioner Elmer S. Hyde will be present to make the awards. Football coaches Edward Berinski and Herman Wische, and the Football Little Leaguers first Director, William "Lefty" Kintzine, will be the guest speakers. Films of the 1956 Belleville-Orange Football game will be shown. Members of the All-Star teams will be introduced as will the members of the twirlers and cheerleaders squads.

The Recreation Department is indebted to the Belleville Elks who have generously donated the use of the hall for the Award Ceremony.

OUR CLASSIFIEDS BRING BRING QUICK RESULTS

costs so little to phone anywhere

Cleveland... 85¢  
Richmond... 70¢  
From NEWARK after 8 PM and Sundays, 2 min. station rate, 10% tax not included.

## A thought for Christmas

There are thousands of people without food in Hungary... thousands of mothers and children without sufficient clothing and shelter.

This is the season of good cheer and good will — and if there ever was an opportunity to express it that opportunity is now.

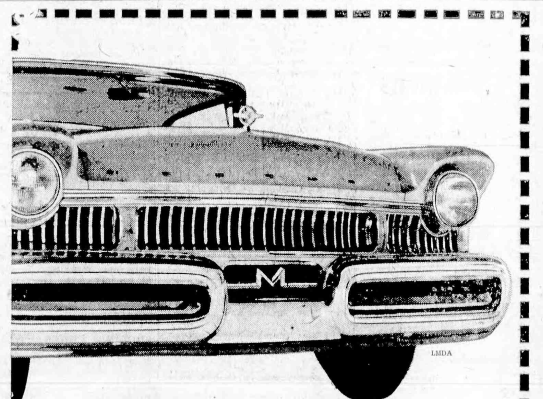
Put these heroic people on your gift list.

Please send your check to your local Red Cross chapter. All contributions will be forwarded directly to the National Red Cross who need

\$5,000,000 to save these unfortunate people.



This advertisement donated by PUBLIC SERVICE



# Don't miss it

Come in and try the only car that has Floating Ride for dream-smooth driving!

## '57 MERCURY

ALTO MOTORS, INC.  
25 Washington Avenue

**MOTOR CLUB of AMERICA**

**YOU GET THE BEST**

find out today

- AUTO INSURANCE
- AUTO FINANCE
- FIRE INSURANCE

**AND SAVE TOO!**

**MOTOR CLUB of AMERICA (AANJ)**  
644 BROADWAY, NEWARK • HU 2-2684  
Largest Organization of Motorists in New Jersey



**NO MONEY WORRIES** In later years when you plan to retire with a regular income provided by Life Insurance. Talk it over with the Man from Manufacturers.

**THE MANUFACTURERS LIFE COMPANY**



Times Classified Advertisements

To Sell, Buy or Trade Telephone Plymouth 9-3200

**Agriculture**  
VOCATURO, ex-avating, land-  
scaping, topsoil, screened and  
sifted, etc. Call 2-4747 or  
Plymouth 9-6649.

**Aluminum Windows**  
ALWINTHE TRIPLE-CHAN-  
NEL COMBINATION WIN-  
DOWS, manufactured by GEN-  
ERAL BRONZE CORPORATION.  
Just over, complete, and con-  
vinced, no obligation. Telephone  
evenings or Saturdays, Mrs. Klein  
Nuttley 2-2078.

**Asphalt Paving**  
SAMUEL GABRIEL &  
COMPANY  
Paving Contractors, sidewalks and  
parking lots. All work guaran-  
teed. We are fully insured. Rm.  
64 East Center St. Nutley, N. J.  
Nuttley 2-0526

**Bedding**  
MAITRESSES, BOX SPRINGS.  
All famous makes; also renovated.  
Mats and juvenile furniture.  
Hammocks, pillows, cushions, etc.  
Capito Bedding, 322 Washington  
Ave., Belleville. PL 1-0174.

**Cabinet Makers**  
CABINET MAKING. Residential  
work. Kitchen cabinets, furni-  
ture repairing and refinishing.  
Hammocks and sofas. Woodworking  
Shop, 224 Washington Avenue,  
Belleville, N. J. Telephone PL  
1-0078.

**Carpenters & Builders**  
ALTERATION, HOME REMOD-  
ELING; will repair and modernize  
your home from basement to  
attic. Financing arranged. Call  
PL 9-2515 day or night; free es-  
timates. Frank Landicco, N.J.

**COMPLETE LINE OF MASON**  
WORK, specializing in garages,  
sidewalks, brick stoops, patios,  
garden walks, etc. All work guar-  
anteed. Frank D'Arc, 717 Fair-  
way Ave., PL 9-9952.

**ALTERATIONS AND ADDI-  
TIONS.** Masonry work, roof-  
ing, painting, gutters and lead-  
ers. Complete kitchen remodeling;  
also Formica tops. No job too  
big or too small. Call Norman Ander-  
son day or night. Plymouth 9-  
0473.

**Alterations and Additions**  
ROOFING  
DORMERS  
PORCHES  
CARPENTRY REPAIRS  
BASEMENTS  
KITCHENS  
ATTICS  
Fred Baber Plymouth 1-0260  
11 Clinton St., Belleville  
Experienced - Reliable

**ANTHONY GIUDICE**  
Carpenter  
Building - Jobbing  
Plymouth 9-4678  
93 Bell St. Belleville, N. J.

**HOMES REMODELED.** Addi-  
tions, alterations, repairs, kitchen  
cabinets, tile ceilings. Kitchen  
cups, cellars, attics, bathroom  
modernized. Porches enclosed.  
New steps, windows, doors.  
George A. Roberts. Telephone  
Plymouth 9-9296. 1-26-56

**MAISON WORK.** Plastering and  
patching. No job too small.  
Telephone Plymouth 9-7243. TF  
C. SALES, 36 Baldwin Place,  
Belleville. Porch enclosures,  
recreation rooms, kitchen remodel-  
ing, garages and general repairs.  
Small jobs a specialty. Telephone  
Plymouth 9-2415.

**Child Care**  
LE BRETON NURSERY  
SCHOOL. Planned program un-  
der trained supervision to develop  
well poised and confident children  
2-6 yrs. Our transportation service  
covers Belleville, Nutley & New-  
ark. Nutley 2-9853.

**Decorators & Painters**  
EWALD TORNIPORTE, INC.  
PAINTING & DECORATING  
of the better grade  
We give quality and service.  
10 Jerome Ave. Belleville, N. J.  
Plymouth 9-1295

**CARL BALZER, Painting paper**  
hanging, wallpapering, etc.  
Humboldt 4-1664. TF 9-31  
PAINTING AND PAPER hanging  
for a good clean job at a reason-  
able price. Call PL 3-3958. Ed Zin-  
ser, 52 Patton Drive, Bloomfield  
N. J.

**Electricians**  
COMPLETE ELECTRICAL  
SERVICE, commercial and resi-  
dential. Outlets, lights,  
switches installed. Essex Electric Co.  
PL 9-1919

**Junk Dealers**  
ATTENTION! I buy papers and  
magazines, metal, iron and  
metal; rags, mattresses; sinks;  
bathtubs and furnaces. 50c per  
100 lbs. Immediate pickup. Call  
J. Luby & Co. Nutley 2-3768.

**ALWAYS TAVING TOP DOL-  
LARS;** rags, 3c lb.; iron, brass,  
copper, metals, Singer sewing ma-  
chines, furures, papers, 20c per  
100 lbs. Immediate pickup. Call  
Ney Scrap Metal, 17 Sover Ave.,  
Keany, Keany 2-0432.

**Kitchens Remodeled**  
KITCHENS and BATHROOMS  
remodeled. Specialists in de-  
sign. All types of cabinets with  
built-in appliances, formica vani-  
ties and fixtures. Financing ar-  
ranged. Craftman, Pligins TF  
5-6331.

**Lawn Mowers**  
HAND AND POWER MOWERS,  
cleaned, sharpened, repaired,  
adjusted. Work guaranteed. Pick  
up and delivery. Grass heads,  
grass clippers, sharpened. Nutley  
Key Shop, 156 Franklin Avenue,  
Nutley 2-6405. TF

**Lost**  
SAVINGS Passbook #50025  
Fidelity Union Trust Com-  
pany, Belleville Office, Belleville,  
N. J. Finder please return to  
bank.

**SAVINGS Passbook #57631.**  
De Witt Savings and Loan  
Association, 463 Washington  
Avenue, Belleville, N. J. Finder  
please return to above address.

**BLACK MALE DOG, mixed**  
"cocker spaniel, white on paws.  
Name PRINCE. Thursday night,  
PL 9-7298 or Nicholas, 430  
Washington Avenue, Belleville.

**BLUE CORDE BAG between**  
Union Avenue and Washington  
Avenue on Jonerston Street, al-  
so vicinity of Sears Roebuck. Im-  
portant items. Finder can keep  
money and wallet if rest of  
items are returned intact. PL  
9-0941. 12-28

**Mattresses**  
CUSTOM MATTRESS MAKERS;  
complete line of bedding, fea-  
turing "Shiffman," "Sleepmaster,"  
Serta and Burton-Dixie mat-  
tresses. Box springs made to  
order. Renovating; same day service.  
Pull line of maple furniture, 85  
Bryn Mawr Ave., Nutley 2-9298.  
Open evenings until 9, Saturdays  
6 P.M.

**Nursing Home**  
PASSA PRIVATE NURSING  
HOME, for chronically ill, con-  
valescent and bed-ridden, male  
and female; day and night nursing.  
Prescott 9-0028. TF

**Oil Burners**  
WELTZ FUEL OIL, 221 Prospect  
Ave., No. Arlington, N. J. Oil  
Burners, fuel oil. Complete auto-  
matic oil heating installations. Oil  
burner efficiency; our specialty.  
Keany 2-5627. TF

**Pets For Sale**  
A BOXER PUPPY FOR CHRIST-  
MAS? We have a boxer, AKC  
masked and cropped, shots. Five  
months old. Good breeding. D.  
N. Hale, telephone Edison 5-  
9195. 12-21

**Property Improvement**  
NEW SIDEWALKS and repairing.  
New lawns and repair. All labor  
and trucking. V. Sampaio,  
79 Carner Ave., Belleville, N. J.  
PL 9-5859.

**Roofers**  
ROOFING CONTRACTOR. All work  
done by owner. New work and  
all types of repairs. Shingle  
roofs, hot tar, slate, and  
chimneys. Skylights, leader and  
gutter work. All work guaran-  
teed, at reasonable prices. George  
Francero, Plymouth 9-1873.

**IF YOUR ROOF LEAKS CALL**  
HAROLD HARRISON, roof ex-  
pert; leaders and gutters installed  
all kinds of roof repairs, chimney  
repairs and slate repairs. 311  
Chestrut Street, Keany or tele-  
phone Keany 2-5497 or Keany  
2-3319.

**Tile Contractors**  
TILE WORK DONE REASON-  
ABLY. Ceramic, metal and  
marble floors; ceramic, asphalt  
rubber, vinyl ceiling blocks, re-  
pairs. Also "do it yourself kits".  
John Forte, call Nutley 2-0285  
or Nutley 2-0589. TF

**TILEMAN. LET ME SHOW you**  
how to modernize your bath-  
room or kitchen with a neater  
and cheaper method of applying  
ceramic tile at a lower cost. D.  
Gangi Tile Co. HU 5-7007. TF  
11-30-56

Rodino Flies Abroad  
To Study Oil Cartels  
In Suez Canal Crisis

As Member of House Judiciary Committee's Sub-  
committee On Trust, Congressman Flew to Ma-  
drid, Then Rome, Paris, Accompanied by Family

Congressman Peter W. Rodino, Jr., accompanied by his  
wife and their daughter, Peggy, left by plane from Idlewild  
Saturday for Madrid on the first step of a long tour of  
European capitals on an official mission involving a study of  
the oil crisis provoked by the closing of the Suez Canal,  
with special reference to the Congressional investigation into  
oil monopolies.

The 10th District Congressman's voyage, organized by  
the State Department, is in his capacity of a ranking mem-  
ber of the anti-trust sub-committee of the House Committee  
on Judiciary. His studies will  
concern chiefly the international  
oil cartels and their influence  
on American markets.

From Madrid, where he con-  
sulted with U.S. Embassy offi-  
cials, Rodino is flying to Rome  
this week. He will also confer  
with the Italian government and  
officials there and at Naples be-  
fore visiting Venice.

On his return flight he will  
go to Switzerland where, with  
out any oil resources of his  
own, the country is wholly de-  
pendent upon foreign resources  
which are all controlled by one  
or another of the international  
cartels. Rodino's investigation  
will center on price controls  
imposed by the international  
trusts.

His return itinerary calls for  
a call in Paris before flying  
home several days before  
Christmas to enable the family  
to spend the holidays with  
their son, Peter III, who has  
remained behind in school.  
His return to Italy, which he  
is visiting for the first time  
since the war, will permit the  
Rodino family to visit some of  
the battle settings where the  
Congressman fought and where  
he won promotion on the battle-  
field.

JOIN OUR  
CHRISTMAS  
CLUB

Peoples National  
Bank and Trust Co.

ST. MARY'S CANA  
SPONSORS DANCE

Rev. John Golding

Rev. John Golding, moder-  
ator of Cana of St. Mary's  
Church, has announced that  
the organization is planning for  
its third annual New  
Years Eve dance. The dance  
will be held in the school  
auditorium.

The chair couple for the  
affair is Mr. and Mrs. Jack Clay-  
ton, assisted by Mr. and Mrs.  
Charles Byrne. The refreshments  
will be catered and the music  
will be provided by the Josh Hol-  
beck orchestra.

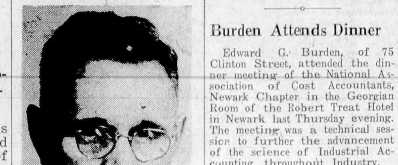
Other committee chair couples  
are: arrangements, Mr. and Mrs.  
Gene Alessio; tickets, Mr. and  
Mrs. John De Kanius; publicity,  
Mr. and Mrs. Edward Quigley;  
and refreshments, Mr. and Mrs.  
Don Harrison.

**BRYANT ELECTED  
EMPLOYEE HEAD**

Raymond J. Bryant, of 149  
Strom Street, has been elected  
employee head of the local chapter  
of the Westinghouse Veterans  
Employees Association. Bryant,  
who is a quality checker at the  
Bloomfield Works, will head up  
the organization for 1957.

The Bloomfield chapter, which  
was organized in 1937 has some  
100 active and retired members  
and twenty or more years of  
service. It covers both the Bloom-  
field and the Belleville lamp  
plants. The Company-wide West-  
inghouse Veterans Employees As-  
sociation has 33 chapters with  
more than 15,000 active members  
and 4,000 retired members.

Hummel Marks  
Long Service



Floyd E. Hummel, of 32 Hewitt  
Avenue, an employee in the New  
Jersey Bell Telephone Company's  
plant department, marked his  
45th year of telephone service re-  
cently.

If You Use Gummy Ingredients In Your  
Vaporizer That Gum And Clog Try  
**KAYMIST**  
Kaymist Provides Medicating Relief  
To Stuffy Nasal Passages, Yet  
Allow Your Delicate Mechanism To  
Remain Clear.  
Available At All Local Drug Stores

**WADSWORTH**  
F. Douglas Wadsworth  
Belleville 9, New Jersey  
PL 2-2879

**WILLIAM V. IRVINE & SON**  
"HOME FOR FUNERALS"  
Our experience of more than fifty years gives  
assurance that our service is considerate and per-  
formed with reverence and dignity.  
• Funeral Costs Should Never Be Beyond  
A Family's Means •  
276 WASHINGTON AVE. - BELLEVILLE N. J.  
PLYMOUTH 9-1114  
WILLIAM V. IRVINE SR. WILLIAM V. IRVINE JR.

an extra phone in Color!



What woman wouldn't love one? An extra phone saves  
literally hundreds of steps every day. And color makes the  
phone a decorator item that sets off the color scheme of  
any room.  
Give her a color phone for Christmas. It's easy to order—  
simply call your Telephone Business Office. With your gift  
certificate you can give her a handsome brochure showing  
all the new model color phones for her to choose from.

CHARCOAL GRAY  
CAMEO IVORY  
COLONIAL GREEN  
ROSE BEIGE  
BRIAR BROWN  
TRUE BLUE  
CARDINAL RED  
CANARY YELLOW  
NEW JERSEY BELL  
TELEPHONE COMPANY  
235 Washington Avenue, Belleville



## Church Bulletin

### ST. PETER'S R.C.

Sunday — Masses at 6, 7, 8, 9, 10, 11, and 12 noon. The 9 o'clock mass is a high mass sung by the children. Masses are also offered at 9:05 and 10:05 in the school auditorium. Benediction of the Most Blessed Sacrament follows the 11 o'clock mass. Captain at 2 p.m.

### ST. ANTHONY'S R.C.

Sunday—Masses in the church at 7:30, 9, 10, 11, and 12 noon. In the chapel at 8 and 11:15. Sunday school will follow the 9 o'clock children's mass.

**CONGREGATION AHAVATH ACHIM**  
Rabbi Dr. Albert L. Rask  
Friday, 8:30 p.m.—Services.  
Service honoring Dr. B. Jacobson.  
Saturday, 9:30 a.m.—Services.

**MONTGOMERY PRESBYTERIAN**  
Rev. Oliver W. Chapin  
Sunday, 9:30 a.m.—Men's bible class.  
9:30 a.m.—Sunday school (2 yr. old primary through high school).  
10:30 and 11:00 a.m.—Worship Services. (Junior church at 11:00 a.m. service).  
11:15 p.m.—Youth programs, youth choir, young people's societies.

**CHRIST EPISCOPAL**  
Rev. Peter R. Deckenbach  
Sunday, 7:30 a.m.—Holy Communion.  
9:30 a.m.—Church Sunday School services.  
11:00 a.m.—Morning prayer and sermon.

**SILVER LAKE BAPTIST**  
Rev. Benedetto Pascali  
Sunday, 10 a.m.—Bible School.  
11 a.m.—Church Worship.  
Friday, 9:30 p.m.—Junior Choir Rehearsal; 7 p.m., High School Choir; 8 p.m., Senior Choir.  
Holy Communion is administering every first Sunday of the month at 6:30 p.m.

**GRACE BAPTIST**  
Rev. Albert V. Lawson  
Friday, 7:30 p.m.—Men's club bowling league.  
Sunday, 9:45 a.m.—Church School. Classes for all age levels. Adult class led by Rev. and Mrs. Paul Sheford.  
11:00 a.m.—Morning Worship "The Set of the Soul".  
Emanuelers to attend Christmas Oratorio at Riverside Church, New York City. Cars to leave at 3:30 p.m.

Tuesday, 8:00 p.m.—Helen V. Davis Guild meets at home of Lorena Clark, 20 Clearman Place—Christmas party.  
Wednesday, 3:45 p.m.—Youth choir rehearsal.  
6:45 p.m.—Intermediate Girls Troop.

phone rates are **LOW**  
Boston.....60c  
Detroit.....90c  
From NEWARK after 4 PM and Sundays, 3 min. station rates, 10% tax not included.

### WESLEY METHODIST

Rev. Clifford A. Hewitt

Sunday, 9:45 a.m.—Sunday School and Adult Bible Class.  
11:00 a.m.—Service of Worship.

Nursery care for children is provided at this service.  
7:00 p.m.—Youth fellowship hour.  
Wednesday, 7:30 p.m.—Boy Scouts, troop 301.  
Thursday, 6:45 p.m.—Youth choir rehearsal.  
8:00 p.m.—Chancel Choir rehearsal.  
8:00 p.m.—Alcoholics Anonymous meets.

### LITTLE ZION UNION, A.M.E. CHURCH

Rev. Macey A. Farris

Sunday, 9:45 a.m.—Church School.  
11:00 a.m.—Morning Worship.

### BELLEVILLE ASSEMBLY OF GOD

Pastor Angelo Cernero

Sunday, 9:30 a.m.—Sunday School Classes for all ages.  
11:00 a.m.—Morning Worship English Service.  
Monday, 7:30 p.m.—Italian Service.  
Wednesday, 7:45 p.m.—English Service.

### FEWSMITH PRESBYTERIAN

Dr. James K. Morse

Saturday, 8:00 p.m.—Couples Club Christmas party.

Sunday, 9:30 a.m.—Church School. Classes for all ages.

11:00 a.m.—Pre-school children class in social hall.

11:00 a.m.—Worship service. Sermon: "The Christian Home".

Music under direction of Miss Hazel Ellsworth.

6:30 p.m.—Junior high fellowship.

7:45 p.m.—Senior high fellowship. Cleveland Bradner, youth director.

Monday, 3:30 p.m.—Girl Scouts. Brownies meet.

Tuesday, 8:00 p.m.—Fellowship Circle Christmas party at church.

Wednesday, 10:00 a.m.—Retired men's club.

7:30 p.m.—Jr. High Church School Christmas party. Edward Albertsen, superintendent.

### BELLEVILLE REFORMED

Sunday, 9:45 a.m.—Church School, classes for all ages.  
10:30—Morning Worship.  
7:30 p.m.—Reformed Youth Fellowship group will meet for devotions at chapel.  
Thursday, 8:00 p.m.—Choir rehearsal.

### BETHANY LUTHERAN

Rev. T. Painter Hanson

Sunday, 9:30 and 11:00 a.m.—Worship Services.  
"Our Accountability to God."  
4:30 p.m.—Christmas party. Ladies Guild.

## ST. MARY'S WINS FIVE, LOSES ONE

St. Mary's CYO won five of six games at the last session of the Essex County Senior CYO Mixed Bowling League. The parish's No. 2 team swept three from St. Joseph's 2, of Newark, to move into eighth place in the 14-team league with a 13-11 record. St. Mary's 1 took a record. Sacred Heart 1, Valisburg, and now shows an 18-9 record good for fifth place.

St. Mary's 2 had to fight for the first two games, winning the first, 640-610, and the second, 656-651 as J. Sheridan and W. Robshaw each rolled 161.

Sheridan's 201 wrap-up made the last game an easy victory, 719-621. Robshaw had a 188 game in that one and since he opened with 167 he compiled a fine 516 series for the night.

St. Mary's 1 started with a win over Sacred Heart, 738-633 as Jim Coffey rolled 189, but

lost the second, 675-627, only to come back and take the match in the finals, 687-668, on Des Torley's 160 game. St. Mary's had to give away as many as 92 pins in the match.

Local Residents Join N. J. Blue Cross Staff

Mrs. Patricia Bennett of 242 Washington Avenue; Mrs. Frances Lane, 178 Adelaide Street; Mrs. Anna Wachowicz, 39 Van Houten Place; John Moore, 174 Division Avenue; and Charles Terrieri, 273 Forest Street have

OUR CLASSIFIED ADS BRING QUICK RESULTS

EVERYMAN'S BIBLE CLASS

Archie Donaldson

Sunday, 9:30 a.m.—Meeting at Masonic Temple.

## DOUBLE SAVINGS EVERYDAY AT

Get Fine Christmas Gifts with S & H Stamps

Lancaster Brand "U. S. Choice"

## CHUCK ROAST lb. 35¢

Lancaster Brand Chuck Roast is mighty mouthwatering fare — always tender, juicy, flavorful!

BONELESS CROSS-CUT ROAST	Lancaster Brand "U. S. Choice"	lb.	79¢
OVEN-READY RIB ROAST	Lancaster Brand	lb.	63¢
FRESH GROUND BEEF		3 lbs.	\$1.00
LEG or RUMP VEAL ROAST		lb.	49¢

Smoked Tongues	Lancaster Brand	lb.	45¢
Sausage Meat	Lancaster Brand	lb. pkg.	39¢
Frankfurters	Lancaster Brand	lb. pkg.	45¢
Corned Beef	Lancaster Brand	lb.	69¢
Hard Salami	Lancaster Brand	4-oz. pkg.	39¢
Hormel Thuringer	Lancaster Brand	4-oz. pkg.	29¢
Hormel Sausage	COUNTRY STYLE	lb. pkg.	55¢

*Swift Frozen Center Cut Boneless Pork Chops	Regularly \$1.51 lb.	Your Choice
*Swift Frozen Boneless Ribs of Beef	Regularly \$1.35 lb.	
*Swift Frozen Boneless Sirloin Roast	Regularly \$1.23 lb.	

SWIFT PREM PORK & BEANS	Delicious 5c Many Ways!	12-oz. Can	39¢
IDEAL CATSUP	VAN CAMPS	3 16-oz. Cans	32¢
PRESERVES	Regular or Hot	2 14-oz. Bottles	35¢
MARGARINE	IDEAL STRAWBERRY	4 12-oz. Jars	\$1.00
	PRINCESS Colored Quarters	2 16-oz. Packages	39¢

Burry Chocolate Chip Cookies	8 3/4 oz. package	Chocolate Macs	8 1/2 oz. package	Choice	33¢
Sunshine Vienna Fingers	14 1/2 oz.	Sugar Jumbles	15-oz.	Your Choice	39¢

All Advertised Prices Effective Through Sat., Dec. 15th

FRESH FRUITS AND VEGETABLES			
ICEBERG LETTUCE	Crisp California Large Head		19¢
STAYMAN WINESAP APPLES	4 lb. Poly Bag		39¢
CAPE COD CRANBERRIES	16-oz. Cello Bag		19¢

Red, ripe and fresh, perk up with fresh cranberries. Keep a supply in your refrigerator freezer unit.



Real Southern Style!  
Pre-Cooked Heat & Serve

Here's a Treat Waiting for You At the Acme Frozen Food Case

## Red-L Frozen Fried Chicken

Whole Chicken lb. 95¢  
Half Chicken lb. \$1.09

lost the second, 675-627, only to come back and take the match in the finals, 687-668, on Des Torley's 160 game. St. Mary's had to give away as many as 92 pins in the match.

Local Residents Join N. J. Blue Cross Staff

Mrs. Patricia Bennett of 242 Washington Avenue; Mrs. Frances Lane, 178 Adelaide Street; Mrs. Anna Wachowicz, 39 Van Houten Place; John Moore, 174 Division Avenue; and Charles Terrieri, 273 Forest Street have

OUR CLASSIFIED ADS BRING QUICK RESULTS

EVERYMAN'S BIBLE CLASS

Archie Donaldson

Sunday, 9:30 a.m.—Meeting at Masonic Temple.

Local Residents Join N. J. Blue Cross Staff

Mrs. Patricia Bennett of 242 Washington Avenue; Mrs. Frances Lane, 178 Adelaide Street; Mrs. Anna Wachowicz, 39 Van Houten Place; John Moore, 174 Division Avenue; and Charles Terrieri, 273 Forest Street have

OUR CLASSIFIED ADS BRING QUICK RESULTS

EVERYMAN'S BIBLE CLASS

Archie Donaldson

Sunday, 9:30 a.m.—Meeting at Masonic Temple.

Local Residents Join N. J. Blue Cross Staff

Mrs. Patricia Bennett of 242 Washington Avenue; Mrs. Frances Lane, 178 Adelaide Street; Mrs. Anna Wachowicz, 39 Van Houten Place; John Moore, 174 Division Avenue; and Charles Terrieri, 273 Forest Street have

OUR CLASSIFIED ADS BRING QUICK RESULTS

EVERYMAN'S BIBLE CLASS

Archie Donaldson

Sunday, 9:30 a.m.—Meeting at Masonic Temple.

Local Residents Join N. J. Blue Cross Staff

Mrs. Patricia Bennett of 242 Washington Avenue; Mrs. Frances Lane, 178 Adelaide Street; Mrs. Anna Wachowicz, 39 Van Houten Place; John Moore, 174 Division Avenue; and Charles Terrieri, 273 Forest Street have

OUR CLASSIFIED ADS BRING QUICK RESULTS

EVERYMAN'S BIBLE CLASS

Archie Donaldson

Sunday, 9:30 a.m.—Meeting at Masonic Temple.

Local Residents Join N. J. Blue Cross Staff

Mrs. Patricia Bennett of 242 Washington Avenue; Mrs. Frances Lane, 178 Adelaide Street; Mrs. Anna Wachowicz, 39 Van Houten Place; John Moore, 174 Division Avenue; and Charles Terrieri, 273 Forest Street have

OUR CLASSIFIED ADS BRING QUICK RESULTS

EVERYMAN'S BIBLE CLASS

Archie Donaldson

Sunday, 9:30 a.m.—Meeting at Masonic Temple.

Local Residents Join N. J. Blue Cross Staff

Mrs. Patricia Bennett of 242 Washington Avenue; Mrs. Frances Lane, 178 Adelaide Street; Mrs. Anna Wachowicz, 39 Van Houten Place; John Moore, 174 Division Avenue; and Charles Terrieri, 273 Forest Street have

OUR CLASSIFIED ADS BRING QUICK RESULTS

EVERYMAN'S BIBLE CLASS

Archie Donaldson

Sunday, 9:30 a.m.—Meeting at Masonic Temple.

Local Residents Join N. J. Blue Cross Staff

Mrs. Patricia Bennett of 242 Washington Avenue; Mrs. Frances Lane, 178 Adelaide Street; Mrs. Anna Wachowicz, 39 Van Houten Place; John Moore, 174 Division Avenue; and Charles Terrieri, 273 Forest Street have

OUR CLASSIFIED ADS BRING QUICK RESULTS

EVERYMAN'S BIBLE CLASS

Archie Donaldson

Sunday, 9:30 a.m.—Meeting at Masonic Temple.

Local Residents Join N. J. Blue Cross Staff

Mrs. Patricia Bennett of 242 Washington Avenue; Mrs. Frances Lane, 178 Adelaide Street; Mrs. Anna Wachowicz, 39 Van Houten Place; John Moore, 174 Division Avenue; and Charles Terrieri, 273 Forest Street have

OUR CLASSIFIED ADS BRING QUICK RESULTS

EVERYMAN'S BIBLE CLASS

Archie Donaldson

Sunday, 9:30 a.m.—Meeting at Masonic Temple.

Local Residents Join N. J. Blue Cross Staff

Mrs. Patricia Bennett of 242 Washington Avenue; Mrs. Frances Lane, 178 Adelaide Street; Mrs. Anna Wachowicz, 39 Van Houten Place; John Moore, 174 Division Avenue; and Charles Terrieri, 273 Forest Street have

OUR CLASSIFIED ADS BRING QUICK RESULTS

EVERYMAN'S BIBLE CLASS

Archie Donaldson

Sunday, 9:30 a.m.—Meeting at Masonic Temple.

Local Residents Join N. J. Blue Cross Staff

Mrs. Patricia Bennett of 242 Washington Avenue; Mrs. Frances Lane, 178 Adelaide Street; Mrs. Anna Wachowicz, 39 Van Houten Place; John Moore, 174 Division Avenue; and Charles Terrieri, 273 Forest Street have

OUR CLASSIFIED ADS BRING QUICK RESULTS

EVERYMAN'S BIBLE CLASS

Archie Donaldson

Sunday, 9:30 a.m.—Meeting at Masonic Temple.

Local Residents Join N. J. Blue Cross Staff

Mrs. Patricia Bennett of 242 Washington Avenue; Mrs. Frances Lane, 178 Adelaide Street; Mrs. Anna Wachowicz, 39 Van Houten Place; John Moore, 174 Division Avenue; and Charles Terrieri, 273 Forest Street have

OUR CLASSIFIED ADS BRING QUICK RESULTS

EVERYMAN'S BIBLE CLASS

Archie Donaldson

Sunday, 9:30 a.m.—Meeting at Masonic Temple.

Local Residents Join N. J. Blue Cross Staff

Mrs. Patricia Bennett of 242 Washington Avenue; Mrs. Frances Lane, 178 Adelaide Street; Mrs. Anna Wachowicz, 39 Van Houten Place; John Moore, 174 Division Avenue; and Charles Terrieri, 273 Forest Street have

OUR CLASSIFIED ADS BRING QUICK RESULTS

EVERYMAN'S BIBLE CLASS

Archie Donaldson

Sunday, 9:30 a.m.—Meeting at Masonic Temple.

Local Residents Join N. J. Blue Cross Staff

Mrs. Patricia Bennett of 242 Washington Avenue; Mrs. Frances Lane, 178 Adelaide Street; Mrs. Anna Wachowicz, 39 Van Houten Place; John Moore, 174 Division Avenue; and Charles Terrieri, 273 Forest Street have

OUR CLASSIFIED ADS BRING QUICK RESULTS

EVERYMAN'S BIBLE CLASS

Archie Donaldson

Sunday, 9:30 a.m.—Meeting at Masonic Temple.

Local Residents Join N. J. Blue Cross Staff

Mrs. Patricia Bennett of 242 Washington Avenue; Mrs. Frances Lane, 178 Adelaide Street; Mrs. Anna Wachowicz, 39 Van Houten Place; John Moore, 174 Division Avenue; and Charles Terrieri, 273 Forest Street have

OUR CLASSIFIED ADS BRING QUICK RESULTS

EVERYMAN'S BIBLE CLASS

Archie Donaldson

Sunday, 9:30 a.m.—Meeting at Masonic Temple.

Local Residents Join N. J. Blue Cross Staff

Mrs. Patricia Bennett of 242 Washington Avenue; Mrs. Frances Lane, 178 Adelaide Street; Mrs. Anna Wachowicz, 39 Van Houten Place; John Moore, 174 Division Avenue; and Charles Terrieri, 273 Forest Street have

OUR CLASSIFIED ADS BRING QUICK RESULTS

EVERYMAN'S BIBLE CLASS

Archie Donaldson

Sunday, 9:30 a.m.—Meeting at Masonic Temple.

Local Residents Join N. J. Blue Cross Staff

Mrs. Patricia Bennett of 242 Washington Avenue; Mrs. Frances Lane, 178 Adelaide Street; Mrs. Anna Wachowicz, 39 Van Houten Place; John Moore, 174 Division Avenue; and Charles Terrieri, 273 Forest Street have

OUR CLASSIFIED ADS BRING QUICK RESULTS

EVERYMAN'S BIBLE CLASS

Archie Donaldson

Sunday, 9:30 a.m.—Meeting at Masonic Temple.

Local Residents Join N. J. Blue Cross Staff

Mrs. Patricia Bennett of 242 Washington Avenue; Mrs. Frances Lane, 178 Adelaide Street; Mrs. Anna Wachowicz, 39 Van Houten Place; John Moore, 174 Division Avenue; and Charles Terrieri, 273 Forest Street have

OUR CLASSIFIED ADS BRING QUICK RESULTS

EVERYMAN'S BIBLE CLASS

Archie Donaldson

Sunday, 9:30 a.m.—Meeting at Masonic Temple.

Local Residents Join N. J. Blue Cross Staff

Mrs. Patricia Bennett of 242 Washington Avenue; Mrs. Frances Lane, 178 Adelaide Street; Mrs. Anna Wachowicz, 39 Van Houten Place; John Moore, 174 Division Avenue; and Charles Terrieri, 273 Forest Street have

OUR CLASSIFIED ADS BRING QUICK RESULTS

EVERYMAN'S BIBLE CLASS

Archie Donaldson

Sunday, 9:30 a.m.—Meeting at Masonic Temple.

Local Residents Join N. J. Blue Cross Staff

Mrs. Patricia Bennett of 242 Washington Avenue; Mrs. Frances Lane, 178 Adelaide Street; Mrs. Anna Wachowicz, 39 Van Houten Place; John Moore, 174 Division Avenue; and Charles Terrieri, 273 Forest Street have

OUR CLASSIFIED ADS BRING QUICK RESULTS

EVERYMAN'S BIBLE CLASS

Archie Donaldson

Sunday, 9:30 a.m.—Meeting at Masonic Temple.

Local Residents Join N. J. Blue Cross Staff

Mrs. Patricia Bennett of 242 Washington Avenue; Mrs. Frances Lane, 178 Adelaide Street; Mrs. Anna Wachowicz, 39 Van Houten Place; John Moore, 174 Division Avenue; and Charles Terrieri, 273 Forest Street have

OUR CLASSIFIED ADS BRING QUICK RESULTS

EVERYMAN'S BIBLE CLASS

Archie Donaldson

Sunday, 9:30 a.m.—Meeting at Masonic Temple.

Local Residents Join N. J. Blue Cross Staff



## THE BELLEVILLE TIMES-NEWS

ADVERTISING, NEWS AND BUSINESS OFFICE  
828 WASHINGTON AVENUE

RALPH E. HEINZEN, EDITOR AND PUBLISHER

Arnold M. Bloom, News Editor

Mia Rita Knoll, Social Editor

### Scene for Greeting

Out of an envelope of white, sealed by snow and ice at night, morning, silver-sun-d-and-starred, pulled a sparkling greeting card.

Curtain of the blue sky drawn back from one star for the dawn, pink upon a house whose track welcomes all its loved one back

Then the sunlight caught the snow setting crystal flakes aglow, glistening on a golden spire, setting bush and tree on fire

tilt the whole scene seemed to say, "A Very Happy Christmas Day!"

Helen Harrington

### Budgets Must Be Slashed

A reassessment of local tax rates, industrial and domestic, might be the start of a healthy fiscal condition but it definitely is not the solution to a grave situation which has legislative lethargy and indifference as its crux. Belleville, alone, cannot end the tragic confusion in taxing property throughout New Jersey as its "true value," as required by the State Constitution and ordered by the Essex County Tax Board on the basis of an anticipated verdict, upholding the Constitutionality of the "true value" requirement, from the State Supreme Court in the Middleton case.

The major share of responsibility lies in Trenton, not in Belleville or in Newark. Ten years ago, a new State Constitution was drafted and adopted. In that Constitution is the clause requiring a fair and just basis of taxation, based solidly on an assessment of property at its "true value."

Alas, the State Legislature stopped half way. It put the clause in the Constitution but it fiddled out before it passed the necessary laws to define "true value" and establish the standards which every municipal tax assessor must observe in fixing appraised values. Without such laws, there is only confusion, alas. No two tax assessors see alike; "true value" to one might mean actual worth, the price that an owner might get if he sold his home or his factory today. To another it might mean the money invested in a house or a factory when it was built.

Even worse, the Essex County Tax Board has ordered Belleville and all the other cities and towns in the county to proceed immediately with a reappraisal of all property on a "true value" basis. Such a reappraisal here cost over \$42,000.

But in the same breath with which the County Tax Board ordered Belleville to reassess its tax rates, it announces that it will not accept that reappraisal as the basis of taxation. Instead it will continue to use its table which it got by checking recent property sales, from court house records, against their assessed values on the town tax rolls. In that way the County Board calculates a percentage of "true value" which it assigns to the town's present tax rolls.

To any individual, anxious about not making a huge cash investment if it can be avoided and unless it is likely to lead to a profit, that doesn't make sense. To

The Times-News it is a mells of bureaucracy in the thin degree. If the County Tax Board orders Belleville to spend \$42,000 to reassess its rates, it should accept the result as a basis of taxation. Or it should not impose such a burden of cost.

With such an uncertainty just ahead, the Town Commission, the Board of Education and the Essex Board of Freeholders must exercise very severe control over their 1957 budgets. Our tax rate must fall, not rise. If we are to be penalized by a higher appraisal on our homes, we must enjoy a lower tax rate. Belleville must be protected against any ultimate increase, in the year ahead, of our town, school and county taxes.

R.E.H.

### Gas Tax Unnecessary

The action of the State Assembly, with many Democrats voting with the Republican majority, in appropriating a supplemental \$8,739,086 to provide matching funds for the multi-million-dollar Federal highway aid program, Monday, proved what The Times-News has contended—that there was plenty of money available in the dark corners of departmental budgets and the hidden recesses of state spendings to raise the needed funds without resorting to a penny additional tax on gasoline.

It is to be expected that Governor Robert Meyner, when he returns from his fortnight of "naval duty" in the Mediterranean to get married, will veto the Assembly's bill, once it gets the anticipated Senatorial approval. The vote of 42-to-5 by which the funds were appropriated, however, lends hope that the Governor's veto can be over-ridden. It should be noted that the new funds would be in addition to the \$20,000,000 already allocated this fiscal year for highways.

The Times-News is delighted with the Assembly's action because, we contend, it proves that the added burden of another penny gas tax never was necessary. It proves, too, to us, that spending breeds contempt for the taxpayers' money. It was time to call a halt to easy tax-raising.

It is our contention that since we already are paying a 35 per cent sales tax on gasoline, at the pumps, we are taxing one essential product enough. A 1-cent tax increase would cost New Jersey motorists \$18,000,000 a year. It would cost Essex County motorists alone \$8,006,000 more. For every 10 gallons of gas we put in our tanks, 70 cents already goes for tax.

Too seldom does a motorist stop to figure what taxes he already pays in New Jersey annually to operate a car, but if he does look into it he will find the following to be an average case:

State and Federal Taxes on Gasoline.....\$58.31  
Motor License and Vehicle Fees.....\$29.13  
Federal Automotive Taxes.....\$24.25

Average Total Tax per Vehicle.....\$111.69

During the first three years of the program (1957 through 1959) New Jersey will collect under present tax rates \$444,710,000 in motor vehicle and gasoline taxes. Of this amount, \$215,730,000 will be allocated for educational and other non-highway purposes.

Until the proponents come up with a better argument—and it had better be worth \$18,000,000 a year to New Jersey motorists—the Times-News will continue to oppose any further penalization of motorists so long as the State diverts half of its present income from highway-user taxes to non-highway projects.

R.E.H.

## One Man's Opinion

No Time Must Be Lost In Reestablishing Mutual Trust Between London, Paris and Washington As Russia Would Exploit NATO Chinks

By Ralph Eric Heinzen

The Western allies paid an unnecessarily high price for the British-French action in attacking Egypt to win back control—and the cash income for stockholders—of the Suez Canal. When London and Paris took the military action they did without clearing it with or informing Washington, they did damage to the prestige of President Eisenhower. With countless millions of Americans, as in the East and the Middle East, they lost "face."

NATO must continue to be the bulwark of American defense for some time to come, just as neither France nor Britain would exist long, as free nations, without it. So, obviously, it behooves President Eisenhower to try and patch up the alliance. Without NATO, nobody is safe on this side of the Iron Curtain.

That is the mission the President assigned to Secretary of State Dulles at this week's Paris meeting of the NATO Council, composed of ministers of the 15 NATO Countries.

That was so evident to tiny Iceland that this week, the Icelandic government withdrew its request for this Summer that we pull our American troops out and give up our strategic airbases there. Now, with Iceland's consent, and to protect the Icelanders against the fate of the Hungarians, we will keep our bases, within easy striking distance of Moscow and other key Russian centers, for our strategic air force.

Anglo-American and Franco-American governmental ties and public relations are at a low ebb. It would be foolish to deny that most Americans were shocked at the duplicity of our allies in attacking without, at least, warning us of their intentions. Most Europeans, far less informed than we were, were stunned, too.

The French and British, fed a leftwing interpretation of American attitude and action by a laborite and socialist press, hate America and Americans more now than they have hated us since the mid-twenties.

Yet when all is said and done, the damage to NATO is minor and of only passing importance. Neither Britain nor France could do without us. That was proven when London was forced to ask Washington and Ottawa to consent to a moratorium on December dollar payments. But it was a costly lesson for us.

HAVE YOU  
VOTED IN  
CITIZEN OF THE YEAR  
CONTEST?

Thanksgiving Day. Over \$3,000 was collected and turned over to Harold J. Binn, president, Essex Unit, New Jersey Association for Retarded Children, at a special meeting of the Ken Smith Association, December 4, 1956.

Those who participated in the Fund Drive can rest assured that the funds collected in Belleville will be used to the greatest extent possible in expansion of present facilities for the benefit of the retarded children in Belleville. The Essex Unit of the Association for Retarded Children has a very complete program set up for the coming year, supplementing the present services and adding several new areas of training and education for the retarded children.

William E. Hirdes  
Mabel E. Condon

FLOOR TAIN  
WILL FIT ---  
YOUR BUDGET

SHABBY?  
FLOORS LOOK  
See What the  
Latest Colors  
and Patterns  
Look Like in  
Your Own  
Home

Call For  
Free Estimate  
Today

FLOOR TAIN  
94 WASHINGTON AVE.  
BELLEVILLE  
PL-96071

oil shortage when the German army cut off Baku and Baku in 1944. Only our oil deliveries through Iran saved Russia.

We and our NATO allies can anticipate that Russian policy from now on will be to try to make sure that the Communists can cut the oil lifeline at Suez or anywhere in the Middle East in the event of war. It is one of the distasteful consequences of the tragic error of the French and British in exposing their vulnerability by too hasty action.

Russia Probing NATO  
It should be apparent to West Europe as to ourselves, that Russia is probing for chinks in our NATO wall.

Failure of American, British, and French leadership to maintain active, adequate consultation on foreign policy has invited bold new thrusts by the Soviet Union against the security of all 15 members of the Atlantic Alliance.

Moscow is now prodding for whatever soft spots may have developed in the Western defense system as a result of the Suez Three's split over action in the Middle East. The Kremlin is also holding the peace offensive for this purpose. Part of this offensive takes the form of diplomatic proposals.

These proposals, which are now being scrutinized in Western capitals, cloak an aggressive lung at the very heart of Western defense. This heart is the core of power created by combining Western European with American military, naval, air, and nuclear resources, backed by financial and economic cooperation.

Costly Infrastructure  
The combination includes, besides armies, naval and air forces, hundreds of air bases such as those in Iceland, thousands of miles of pipeline connected with European Atlantic Ports, vast new communications systems now performing peace-time duty as auxiliaries to Europe's regular systems, submarine cables, naval facilities, radar stations.

Of considerable importance in Western Europe's internal struggle with communism has been the effect on economic conditions in many European countries of financing and building this tremendous "infrastructure." This activity has created an additional dynamic system of production, employment, exchange and finance within and reinforcing Western Europe's already established economic life.

The disarmament proposals

with which Moscow has come forward in the last few weeks would, if accepted at face value, mean the dismantling of these Atlantic bastions in Europe and the recall of American forces to the distant United States.

Russians Look Ahead  
This would leave a presumably partially disarmed, but still overpowering, Soviet Union on the threshold of a hostessly exposure of non-Communist Europe. Europe militarily the political and economic pressures which it could in such a situation direct Westward would in themselves constitute a great danger to the stability of many Western European governments.

A withdrawal of American forces would mean the end of an effective North Atlantic Treaty Organization. NATO spokesmen have often declared. This would leave free Europe even more exposed to Soviet domination than when NATO first hastened to its rescue.

The United States' possession of nuclear armament does not provide the deterrent to aggression that it did in 1948. What it now does is to maintain the atomic stalemate which has also to be supported by a balance of other forms of military power.

Super leaders can have no illusions about the prospect of leading the United States Government down this thorny garden path. Alliance leaders believe, but Moscow will try to gauge from the reactions of the United States' allies to these overtures how firmly or loosely the great wall of freedom in the West now stands.

Will NATO's smaller members in particular show signs of wavering, since any crack in Western defense exposes them more dangerously than it does big NATO leaders to the hazards of Soviet power politics?

While stimulating economic activities in these countries NATO armaments programs have also placed heavy burdens on their tax and business structures. With restricted resources over which to spread these burdens, the smaller members of NATO have sometimes felt they were more pinched by their relatively minor contributions to joint defense than the bigger nations were by their enormous efforts.

And the smaller members have lacked an equal voice in NATO affairs, sometimes showing commendable understanding of why this had to be, and sometimes a natural impatience.

But the confusion that now exists in leading European countries and the pressure on the merits of American leadership in the alliance appears to have fostered hopes for pushing American forces and American influence out of Europe.

Moscow seems to feel that the prospect of the Americans "going home" might be welcome to Europeans, especially if it can be conjured up as part of a picture of a pacified, disarming, and more secure world.

Such expectations could tend toward a letdown in the European nations' own defense efforts. NATO officials warn. It would foster political confusion as the sense of living in a power vacuum once more spread among European peoples. The potential gains for Moscow are obvious.

FOR THE BEST IN  
**GAS HEAT**  
Call NU. 2-0541

No Interruption In Heating

\* GAS CONVERSIONS  
\* GAS BOILERS  
\* GAS HEATING SYSTEMS

**HOME GAS HEATING CO.**

433 Kingsland Road, Nutley

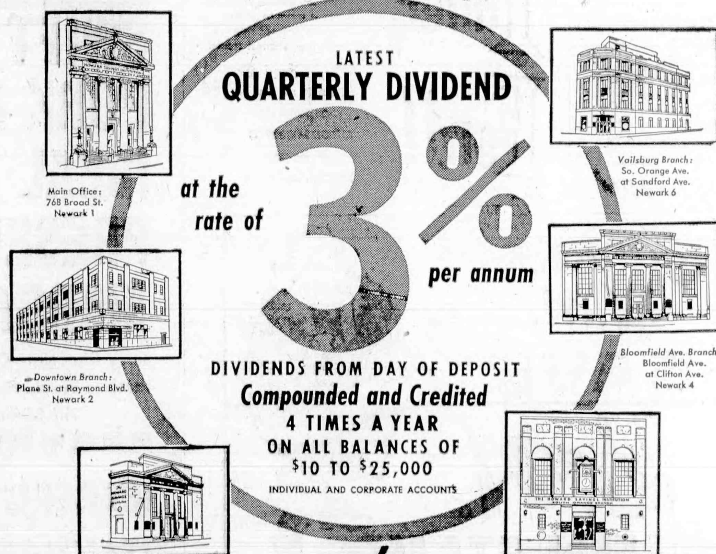
PROFITABLE AND CONVENIENT  
SAVING FOR YOU

LATEST  
QUARTERLY DIVIDEND

at the  
rate of  
\$10.00  
per annum

DIVIDENDS FROM DAY OF DEPOSIT  
Compounded and Credited

4 TIMES A YEAR  
ON ALL BALANCES OF  
\$10 TO \$25,000  
INDIVIDUAL AND CORPORATE ACCOUNTS



The  
**HOWARD SAVINGS Institution**  
New Jersey's Largest Savings Bank—Established 1857  
Member Federal Deposit Insurance Corporation



JOIN OUR 1957

**CHRISTMAS CLUB!**

Have \$50 To \$300 Next November  
by Saving \$1, \$2, \$3, \$5 or \$10 weekly.

FREE PARKING At All Branches

MAIL THIS COUPON NOW—

The Howard Savings Institution, 768 Broad St., Newark 1, N. J. (BN-127)

I enclose \$\_\_\_\_\_. Please open a savings account as checked below:

☐ Individual Account in my name.

☐ Trust Account for \_\_\_\_\_

☐ Joint Account with \_\_\_\_\_

☐ Send me free postage-paid envelopes and banking-by-mail forms.

NAME \_\_\_\_\_

ADDRESS \_\_\_\_\_

CITY \_\_\_\_\_ ZONE \_\_\_\_\_ STATE \_\_\_\_\_

Send check or money order. If you send cash, use Registered Mail.

## Letters To The Editor

Editor, Belleville Times-News:

At the last three meetings of the Belleville Town Commission, I have appeared, in behalf of our Belleville members, and have requested the commissioners to establish by ordinance a limit on the number of club liquor licenses to be issued by the Belleville Commission. This problem is of interest to all citizens of Belleville. Their interest transcends that of either the tavern owners or the clubs. Therefore, an opinion by the lack of concern displayed by the citizens of Belleville. My position in this matter is no different today than it was nearly 24 years ago when the basic state liquor control law was being written. Although many of my suggestions were written into the law one that limited licenses was not.

My advice to my associates has always been that they had to prevent public hostility by the manner in which they conducted their establishments and by not having a multiplicity of retail outlets. The soundness of this advice is apparent when the tendency today is to reduce rather than increase their number. A belated recognition of a blunder.

Clubs, by their locked door operation, reminiscent of speak-

easy days, are difficult to police. Where they get this privilege I don't know. It is a method of operation that has permitted violations such as gambling and sales during prohibited hours. There are also economic features. For \$100 fee the issuing authority is subsidizing competition that can destroy a \$500 income. The competition comes from the fact that by their low cost of dispensing alcoholic beverages, and as they are supposed to be primarily in existence "not for private gain," at regulated by the ABC Regulations, they can sell and attract purchasers, at a price lower than a tavern. In the past it has come to my attention that Clubs have purchased large quantities of liquor, particularly during the holiday season, and resold it to members at cost. Of course, the latter is a violation, but also creates conditions that encourage violations and you will have them. The State ABC has admitted many times they do not have the personnel to enforce the liquor laws. They must depend upon complaints.

The application of such a regulation upon the Association rather than limitation as suggested by the Commissioners does not solve the problem. If

is an opinion rather than a requirement of an ordinance what constitutes "suitable premises" as required by the ABC regulations.

If there are reasons why Mantel and Bloomfield do not find it necessary to issue any club licenses and Newark to limit the number that can be permitted, surely Belleville can find a reason to limit the number.

New Jersey Tavern Owners, Inc.  
Thomas A. Byrne,  
Executive Secretary.

Editor, Belleville Times-News:

On behalf of the Belleville Parents Group, Essex Unit, Association for Retarded Children, we wish to extend our sincere thanks to those whose recent generosity made it possible to reach and exceed the goal set for Belleville in the 1956 statewide Fund Drive for Retarded Children. We also wish to publicly acknowledge the wonderful and complete cooperation of the members of the Ken Smith Association in organizing and conducting the solicitation for funds in Belleville. Under the leadership of Ken Smith, Commissioner of Public Works, and Mrs. Joseph Burke, General Fund Drive chairman, the members of the Association have conducted a full-scale, town-wide solicitation of the community in a two-week period ending





**Clean... Tempting... Farm Fresh Produce**

**Potatoes** Long Island 10 lbs. **37¢**  
Selected

FLORIDA — Sweet Juicy **12 for 25¢**  
**Tangerines**

SUNKIST — First of the Season **10 for 49¢**  
**Navel Oranges**

CHRISTMAS **69¢** med. **1.29** 1.89  
**Wreaths**

IMPORTED — Greek **15 oz. 29¢**  
**String Figs**

CALIFORNIA **12 oz. 23¢**  
**Hydrated Dates**

CHRISTMAS **25¢**  
**Corsages** IN ACETATE BOX ea.

Select from our outstanding assortment of Christmas Wreaths and Decorations. We also carry a wide selection of — Table Center Pieces, Door Knockers, Cemetery Sprays, Poinsettia Plants and Snowball Sprays. Shop early for best selection.

**Make Food Fair  
Your Headquarters  
for all your  
Christmas Needs**

### BAKING NEEDS

Pillsbury Flour 5 lb. 53¢  
Sunmaid Zante Currants 11 oz. 22¢  
Sugarripe Beached Raisins 15 oz. 23¢  
Sunmaid Seedless Raisins 15 oz. 21¢  
McCormick Ground Cinnamon 1 1/2 oz. 15¢  
McCormick Ground Cloves 1 1/2 oz. 27¢  
McCormick Ground Nutmeg 1 1/2 oz. 31¢  
McCormick Whole Allspice 1 1/2 oz. 25¢  
McCormick Vanilla Extract 4 oz. 45¢  
Roeding Black Mission Figs 16 oz. 19¢  
Roeding Calamyrna Figs 4 oz. 21¢  
Borden None Such Mince Meat 28 oz. 49¢  
Dromedary Cubed Pineapple 16 oz. 27¢  
Dromedary Lemon Peel 2 1/2 oz. 35¢  
Dromedary Whole Red Cherries 4 oz. 31¢  
Dromedary Orange Peel 2 1/2 oz. 35¢

### CANDIES

Christmas Choc. Golden 2 lb. \$1.09 4 lb. \$1.98  
Bonomo Hard Candy 2 lb. box 98¢  
Mixed Hard Candy 3 lb. box 98¢  
Filled Solid Mix Candy 2 lb. jar 98¢  
Santa Mix Hard Candy 16 oz. jar 29¢  
Kindergarten Mix 14 oz. jar 29¢  
Yorktown Rock Candy 11 1/2 oz. jar 29¢  
Yorktown Filled & Solid Mix 13 oz. jar 29¢  
Yorktown 100% Filled Mix 13 oz. jar 29¢  
Charms Gift Pak 14 oz. jar 45¢  
Kiddie Pops New Double Size Packages 10 1/2 oz. jar 29¢

### TAPES & WRAPPINGS

Scotch Gift Tape Assorted Patterns 25¢  
Sasheen Ribbon Assorted 1/2" 20 98¢ 1/4" 15¢  
Glass Wax Christmas Stencils 23¢  
Gift Wrap Continuous Roll 20" 10 49¢  
Special Christmas Card Assortment 25¢  
Vogue Deluxe Christmas Cards 21¢  
Christmas Card Perfection Lunette 30¢

**Your Best Meat Buys this Weekend**  
**PSG\* TOP QUALITY — U. S. Gov't. Graded "CHOICE"**

**Chuck Roast** lb. **35¢**  
\*Protected, Selected & Guaranteed to please or your Money Refunded

**PSG TOP QUALITY - U. S. Gov't. Graded "CHOICE" - Boneless**  
**Cross-rib Roast** No Fat Added lb. **69¢**

READY-TO-EAT — Short Shank **12 oz. 25¢**  
**Smoked Cans** lb. **37¢** **Sliced Bacon** 8 oz. Pkg. **25¢**  
LEAN MEATY — For Boiling **12 oz. 21¢** **Corned Beef** lb. **69¢**

**Savings on Famous Brand Groceries**

**Fre-Mar Fruit Cocktail** 30 oz. can **33¢**  
**Del Monte Corn** Golden Cream Style 2 1/2 oz. cans **29¢**  
**Beans** Fre-Mar Blue Lake 15 1/2 oz. can **27¢** Blue Lake 16 oz. can **29¢**  
**Fyne-Suds** Liquid Detergent 12 oz. can **29¢**  
**Wax Paper** Blue Ribbon Triple Coated 2 100 ft. rolls **35¢**  
**Del Monte Pumpkin** 2 1/2 oz. cans **25¢**  
**Libby's Tomato Juice** 46 oz. can **29¢**  
**Del Monte Drink** Pineapple Grapefruit 46 oz. can **29¢**  
**Maxwell House** Instant Coffee 6 oz. jar **1.39**  
**Swansdown** Instant-Yellow or Devil's Food 2 oz. pkg. **29¢**  
**Dromedary** Dixie Fruit Cake Mix 17 1/2 oz. pkg. **69¢**  
**Heinz Beans** CAMPBIDE Buy 2 Get 1 FREE 3 16 oz. cans **45¢**

**Quick FIX Meals For Christmas Shoppers**

Fre-Mar Cut Beans Blue Lake 15 1/2 oz. 21¢  
Savoia Ravioli with Sauce 15 oz. jar 19¢  
Dinly Moore Beef Stew 24 oz. 39¢  
Chun King Vegetable Dinner 53¢  
Chief Boy-ar-dee Spaghetti & Meat Balls 40 oz. can 53¢  
Fre-Mar Salmon Puget Sound 7 1/2 oz. 59¢  
Fyne-Taste Spaghetti 2 1/2 oz. 25¢  
Royal Prince Yams 15 oz. jar 27¢  
Chicken of the Sea White Meat 3 1/2 oz. 25¢  
Oyster Stew Chicken of the Sea 10 oz. 29¢  
Burry Tiarra Cookies 7 1/2 oz. 33¢  
Large Ripe Olives Early Calif. 7 oz. 31¢

### Dairy Fair Features

## Sharp Cheese

STATE FAIR Old Fashioned lb. **79¢**  
MAYFAIR — American, Swiss or Pimento Cheese Slices 8 oz. pkg. **29¢**  
MAYFAIR Cheese Food 2 lb. loaf **69¢**

### Fresh Frozen Foods

FF DELUXE  
**French Fries** Fresh 2 9 oz. **29¢**  
Frozen  
TASTE O' SEA — Fresh Frozen Fish Sticks 10 oz. pkg. **33¢**  
MILADY'S — Cheese or Blueberry Blintzes Fresh Frozen 8 oz. pkg. **39¢**

### Delicatessen Dept. Savings

## Pork Roll

TAYLOR (1 1/2 lb. Midget) ea. **99¢**  
TAYLOR Pork Roll Slices 6 oz. pkg. **29¢**  
KITCHEN FRESH Crab Cakes 2 per pkg. **39¢**

### Bakery Dept. Specials

LADY FAIR  
**Fruit Cakes** 1-lb. **59¢** 2-lb. **98¢**  
1/2 ring  
LADY FAIR — Reg. 29¢  
**Applesauce Loaf** 25¢  
LADY FAIR — Reg. 29¢  
**Breakfast Cake** 25¢

**Redeem Your...  
MERCHANT'S  
GREEN STAMPS**  
for Thousands of Wonderful  
**FREE Christmas Gifts**



**Decorate for the Holidays**  
REG. \$1.69 — Set of 3  
**Paint Brushes**  
• Sizes 1", 1 1/2" & 2 1/2"  
• Natural Bristles  
Set in Rubber **88¢**

**Ocean Fresh Sea Food**  
Boneless and Skinless  
**Flounder Filet** lb. **69¢**  
Fresh Caught  
**Boston Mackerel** lb. **35¢**

**Savings on Lever Bros. Products**  
Lux Liquid Detergent 12 oz. 37¢  
Swan Toilet Soap 5 1/2 oz. 23¢  
Silver Dust Blue With FREE Face Cloth 33¢  
Rinso Blue Detergent 1 1/2 gal. 69¢  
Breeze With FREE Dish Towel 79¢  
Lifebouy Soap 3 reg. size 29¢  
Spry 1 lb. 24¢ 3 lb. 97¢  
Swan Soap 3 1/2 oz. 25¢  
Lux Soap 3 1/2 oz. 25¢  
Lux Flakes 3 1/2 oz. 32¢  
Rinso White 3 1/2 oz. 77¢  
Surf 1 1/2 oz. 65¢

**Excelsior**  
Fresh Frozen  
Cheeseburgers or  
Beef Sandwich Steaks  
8 oz. 41¢  
Buttered Beef Steaks 8 oz. 39¢  
Breaded Veal Cutlets 8 oz. 59¢  
Breaded Veal Steaks 8 oz. 39¢  
Calves Liver 8 oz. 65¢  
**Niblets**  
Cut — All Green  
Asparagus Spears 10 1/2 oz. 25¢

**Ritter's**  
Tomato Juice 16 oz. 29¢  
**Red Heart**  
Meat, Fish or Liver  
Dog Food 3 16 oz. 43¢  
Swifts Allsweet 1 lb. 26¢  
Margarine 1/2 lb. 26¢

**Phillips**  
Tomato Soup 3 10 1/2 oz. 29¢  
**Comet**  
Cleaniser 2 14 oz. 29¢  
**Sunshine**  
Krispy Crackers 1 lb. 27¢

**OPEN LATE: Thurs. to 9 pm Fri. to 10 pm Sat. 8 am to 8 pm**  
**Plenty of FREE PARKING**

**554 Washington Avenue, Belleville**

WE RESERVE THE RIGHT TO LIMIT QUANTITIES.  
— NONE SOLD TO DEALERS.

GROCERY PRICES EFFECTIVE DEC. 13 thru DEC. 19. ALL OTHERS DEC. 13, 14, and 15 ONLY.



A&P's Famous "Super-Right" Quality

SHOP EARLY! SAVE PLENTY!

# RIBS OF BEEF

Oven-Ready Ribs of Beef

"Super-Right" Quality Beef

**Chuck Steaks** lb. **49¢**

"Super-Right" Quality Beef

**Rib Steaks** 7" Cut lb. **69¢**

"Super-Right" Quality — Combination Chop & Stewing

**Lamb Shoulders** lb. **29¢**

"Super-Right" Quality — Freshly Ground

**Ground Beef** lb. **35¢**

"Super-Right" Quality — Fresh Calas

**Pork Shoulders** lb. **29¢**

"Super-Right" Quality — Center Cuts

**Pork Chops** lb. **69¢**



Plan Now To Order  
Your Christmas Turkey!

**Del Monte Peaches** Sliced or Halves 2 29 oz. cans **57¢**

**Dole Pineapple Juice** 2 46 oz. cans **51¢**

**Pride OF THE Farm Catsup** 2 14 oz. bots. **37¢**

**B & M Beans** 2 13 oz. cans **29¢** 18 oz. glass **20¢**

**Gelatin Desserts** Sparkle Ann Page 4 pkgs. **25¢**

**Seedless Raisins** A & P Brand Our Finest Quality 15 oz. pkg. **17¢**

**Oreo or Swiss Cremes** Nabisco pkg. **32¢**

**Hydrox Cookies** Sunshine 7 1/2 oz. pkg. **21¢** 12 oz. pkg. **32¢**

**Colgate's Fab** For the Family Wash giant pkg. **71¢**

**Crispo English Assortment** 16 oz. 39¢  
**Q. T. Instant Cake Frosting** 2 16 oz. 33¢  
**Cocoa Marsh** Chocolate syrup 12 oz. 33¢  
**Marshmallow Fluff** 7 1/2 oz. 24¢  
**Marcal Paper Hankies** 3 30 23¢  
**Cut-Rite Waxed Paper** 125 ft. roll 25¢  
**Woodbury Beauty Deodorant Soap** 3 reg. 29¢ 2 bath cakes 27¢

**Seeded Raisins** A&P brand Our finest quality 15 oz. 27¢  
**B & B Sliced Mushrooms** Our finest quality Broiled in butter 3 oz. 33¢  
**Wheatena** Hot breakfast cereal 22 oz. 33¢  
**Broadcast Redi-Meat** 12 oz. 37¢  
**Liverwurst Spread** Stahl-Meyer 2 3 oz. 29¢  
**Tuna Fish** Chicken of the Sea White meat 7 oz. 37¢  
**Nedicks Orange Drink** Plus dep. 6 Bottles 37¢

## CHRISTMAS TREE LIGHTS

U.L. Approved American made Christmas lighting outfits with General Electric Bulbs. Each bulb burns independently.

7 Light Indoor Set A 2.19 Value **1.69** 7 Light Outdoor Set A 2.79 Value **2.29** 15 Light Indoor Set A 4.29 Value **3.49** 15 Light Outdoor Set A 5.79 Value **4.89**

\*Available in most A&P Super Markets

EXTRA BULBS

Set of 5 Indoor A 75c Value **59¢** Set of 5 Outdoor A 95c Value **79¢**

Fresh Pack — Washed

**SPINACH** 10 oz. cello. bag **19¢** 20 oz. cello. bag **33¢**

Maine or Long Island — U. S. No. 1 Grade A Size

**POTATOES** 10 lb. bag **37¢** 25 lb. bag **79¢**

Sweet and Juicy

**TANGERINES** Large Size 10 for **25¢**

Red, Ripe

**TOMATOES** HOT HOUSE lb. **39¢**

## Dairy Center Buys!

Sunnyfield Fancy Creamery — Salt or Sweet

**FRESH BUTTER** (in 1/4 lb. prints lb. 69¢) 1 lb. brick **67¢**

**Sliced Muenster Cheese** Fancy, Wisconsin lb. **55¢**  
**Sliced Provolone Cheese** Domestic Salami style lb. **59¢**  
**Imported Italian Romano** lb. **99¢**  
**Danish Blue Cheese** Imported lb. **83¢**  
**Borden's Milk** Homogenized quart cont. **25¢**

**Sliced Natural Swiss** lb. **55¢**  
**Swiss Knight Gruyere** Imported cheese 6 oz. **39¢**  
**Cream Cheese Cups** Borden's All varieties 5 oz. cups **49¢**  
**Dannon's Yogurt** Plain or Vanilla 8 oz. cups **35¢**  
**Borden's Medium Cream** 2 lb. pint cont. **58¢**

## Frozen Food Values!

**Potato Patties** 3 12 oz. pkgs. **41¢**  
**Minute Maid Tangerine Juice** 2 6 oz. cans **29¢**  
**Libby's Orange Juice** 3 6 oz. cans **49¢**  
**Birds Eye Green Beans** French style 3 9 oz. pkgs. **49¢**  
**Birds Eye Cut Corn** 2 10 oz. pkgs. **31¢**  
**Birds Eye Cauliflower** 2 10 oz. pkgs. **23¢**  
**Birds Eye Chopped Broccoli** 2 10 oz. pkgs. **19¢**  
**Libby's Brussels Sprouts** 2 10 oz. pkgs. **27¢**  
**Libby's Spinach** Chopped or Leaf 3 10 oz. pkgs. **44¢**  
**Swanson's Pies** Turkey, Chicken or Beef 2 8 oz. pkgs. **55¢**  
**Swanson's Chicken Breasts** 2 1 lb. pkgs. **97¢**  
**Morgan's Clam Chowder** 2 12 oz. tin **37¢**

## ENCYCLOPEDIA OF PICTURED KNOWLEDGE

14 beautiful volumes in beautiful colors on our convenient book a week plan. Volume 5 Now On Sale each **99¢**  
Volume 1-2-3-4 Also Available

## CHERRY PIE

Plenty of juicy sun-ripened cherries in a flaky-crisp crust



**Caramel Pecan Rolls** pkg. of 8 **35¢**  
**Layer Cake** VANILLA FUDGE each **69¢**  
**Pfeffernusse Cookies** 11 oz. bag **35¢**

## Jane Parker Fruit Cake

America's favorite... over 50 fruits and nuts.  
1 1/2 lb. cake **1.39** 3 lb. cake **2.75** 5 lb. cake **3.95**  
DARK FRUIT CAKE 1 lb. cake **79¢** 2 lb. cake **1.49**

<b>Beech-Nut Baby Food</b> Strained 10 reg. 99¢ Chopped 6 reg. 89¢	<b>Kraft's Velveeta</b> Cheese Spread 8 reg. 27¢ 2 lb. pkg. 99¢	<b>Camay Soap</b> For Toilet and Bath 3 reg. 26¢ cakes	<b>Camay Soap</b> Especially for the Bath 2 bath cakes 25¢
<b>Rinso Blue</b> For Laundry and Dishes large 29¢ giant pkg. 69¢	<b>Dreft</b> For the Family Wash and Dishes large 32¢ pkg.	<b>Lifbuoy Soap</b> For Toilet and Bath 3 reg. 29¢ cakes	<b>Lifbuoy Soap</b> Especially for the Bath 3 bath cakes 40¢
<b>Joy Detergent</b> Especially for Dishes — Liquid 7 oz. 31¢ bottle giant 75¢ bottle	<b>Blue Cheer</b> New Washday Suds large 31¢ giant 75¢ pkg.	<b>Oxydol Detergent</b> For the Family Wash large 32¢ giant 77¢ pkg.	<b>Spic &amp; Span</b> For Washing Painted Surfaces large 27¢ giant 85¢ pkg.
<b>Red Heart Dog Food</b> Beef, Fish or Liver 3 16 oz. cans <b>43¢</b>	<b>Swanee Toilet Tissue</b> Cello-Soft 4 rolls <b>45¢</b>	<b>Ivory Snow</b> For Dishes and Fine Fabrics large 32¢ giant 77¢ pkg.	<b>Ivory Flakes</b> For Dishes and Fine Fabrics large 32¢ pkg.
<b>Tide</b> For the Family Wash large 31¢ giant 75¢ pkg.	<b>Dash Detergent</b> For Automatic Washers large 37¢ pkg.	<b>AP Super Markets</b> THE GREAT ATLANTIC & PACIFIC TEA COMPANY Prices effective thru Sat., Dec. 15th in Super Markets and Self-Service stores.	

Shop in comfort at your A & P Super Market  
333 Franklin Avenue, Belleville, N. J.

Store Hours:

Open Tues. - Thursday 'till 9 p. m.  
Fridays 'till 10 p. m.  
Large, Free, Parking Area

Another A & P Super Market  
169 Washington Ave.  
Opposite Town Hall - Belleville